

# BUSINESS RESOURCE CENTER



## THANK YOU FOR CHOOSING US FOR YOUR INSURANCE NEEDS!

In addition to your policy coverage, did you know that you have access to a variety of free and discounted resources that will assist you in running your business?

### MAKE THE RIGHT CHOICES

WITHOUT THE EXPENSE  
OF CONTACTING A  
LAWYER

Have a question about FMLA?  
Need advice to handle a  
personnel issue, such as  
harassment or discrimination?  
For FREE and unlimited  
access to Human Resource  
Specialists call:  
**1-877-655-3566 and press 1**

Have a question related to a  
Workers' Compensation issue?  
Want to find out what your  
rights are as an employer if an  
incident occurs? For FREE and  
unlimited access to Workers'  
Compensation Specialists call:  
**1-877-655-3566 and press 2**

Access Online Human  
Resource Training Modules  
for managers and employees  
– Discounted rates available

### HIRE THE RIGHT EMPLOYEES

TO MAKE YOUR  
BUSINESS SUCCESSFUL

Background Check Services  
– First one is FREE and then  
pricing for each additional  
screen starts at \$10,  
excluding court and/or state  
fees that may apply

Motor Vehicle Reports –  
Discounted rate of \$5.00 +  
applicable state fees

Recruiting and Interviewing  
Online Training Module –  
FREE access to acquire the  
skills needed to select the  
right candidates for your  
company

### TAKE THE STEPS TO REDUCE

YOUR CYBER RISK

Credit monitoring and cyber  
risk recovery services with  
reimbursement up to \$20,000  
for out-of-pocket expenses  
related to identity restoration

Access to four discounted  
identity theft packages ranging  
from \$79.23/year to \$99.48/year

## MORE RESOURCES:

- Tenant Screening
- Payroll Services
- Alcohol Safety Training
- Educational Resources
- Marketing and Social Media Resources

For more information and to utilize these  
services, contact your insurance agent  
or visit

[usli.com/brc](http://usli.com/brc)



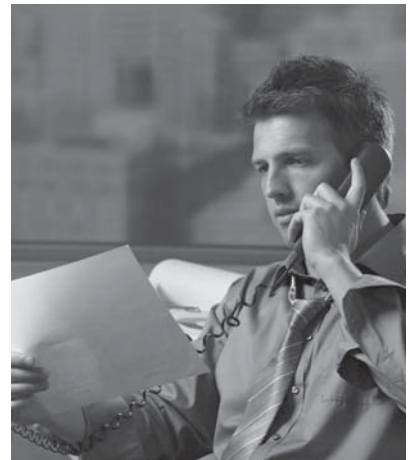
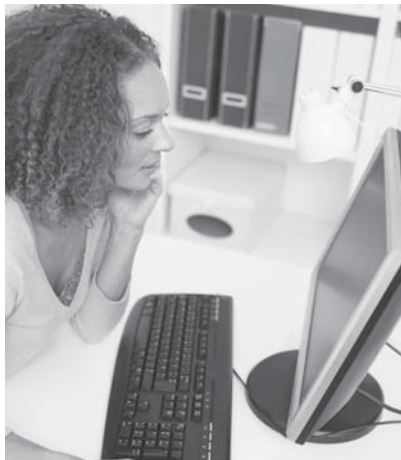
# 24/7 CLAIM REPORTING

In our continuing effort to provide you with excellent claim service, you may now report a claim and get claim assistance 24 hours a day/7 days a week.

**FOR CLAIM REPORTING ONLY:**  
Call Toll Free **1-888-875-5231**

**FOR ALL OTHER INQUIRIES:**  
Call Toll Free **888-523-5545**

**YOU MAY REPORT ON-LINE:**  
**usli.com** - select the "report a claim option"



For emergency claims requiring immediate assistance, please use the toll free option. Your call will be referred to a claims professional who will respond within an hour of your call with direction and assistance.

Thank you for placing your trust in our company. We pledge to work hard every day to earn and maintain that trust.



## Note About Loss Control

Dear Valued Policyholder,

Slips, trips and falls are among the most frequent causes of loss. What might surprise you is that, many times, they result in claims and judgments in the hundreds of thousands of dollars, which ultimately impact your insurance premium. In most instances, these claims can be lessened or prevented entirely simply by addressing the most common causes of such losses listed below.

### Most Common Causes

- Spills, wet or icy walking surfaces
- Uneven or worn floors/carpets/steps/sidewalks
- Inadequate or poorly maintained lighting
- Obstructed views
- Poor housekeeping - Excess clutter/trash in walkways or near open flames or hot surfaces

We encourage you to please take the time to periodically inspect your premises to see if any of these conditions exist and work to eliminate them where possible. Your efforts may save you money on future insurance premiums and, quite possibly, save your business.

Thank you for choosing and trusting us to help protect your business!

*"An ounce of prevention is worth a pound of cure."  
Benjamin Franklin*

Regards,

A handwritten signature in black ink that reads 'Thomas P. Nerney'. The signature is fluid and cursive, with a large loop at the end of the 'y'.

Thomas P. Nerney  
Chairman, President, & CEO

NPP2559058

Renewal of Number

# Mount Vernon Fire Insurance Company

1190 Devon Park Drive, Wayne, Pennsylvania 19087

A Member Company of United States Liability Insurance Group

POLICY DECLARATIONS

No. NPP2559058A

NAMED INSURED AND ADDRESS:

**Kuau Bayview at Paia Homeowners Association**  
**37 Kaiea Place**  
**Paia, HI 96779-8108**

This insurance contract is issued by an insurer which is not licensed by the State of Hawaii and is not subject to its regulation or examination. If the insurer is found insolvent, claims under this contract are not covered by any guaranty fund of the State of Hawaii.

POLICY PERIOD: (MO. DAY YR.) From: 02/01/2015 To: 02/01/2016

12:01 A.M. STANDARD TIME AT YOUR MAILING ADDRESS SHOWN ABOVE

FORM OF BUSINESS: Non Profit Organization

BUSINESS DESCRIPTION: Community Association

**IN RETURN FOR THE PAYMENT OF THE PREMIUM, AND SUBJECT TO ALL THE TERMS OF THIS POLICY, WE AGREE WITH YOU TO PROVIDE THE INSURANCE AS STATED IN THIS POLICY.**

THIS POLICY CONSISTS OF THE FOLLOWING COVERAGE PARTS FOR WHICH A PREMIUM IS INDICATED.  
THIS PREMIUM MAY BE SUBJECT TO ADJUSTMENT.

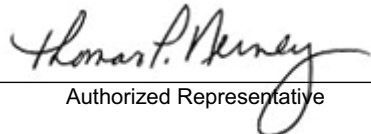
	PREMIUM
Commercial Liability Coverage Part	\$500.00
Professional Liability Coverage Part	\$972.00
Surplus Lines Tax	\$68.89
<b>TOTAL:</b>	<b>\$1,540.89</b>

Coverage Form(s) and Endorsement(s) made a part of this policy at time of issue

**See Endorsement EOD (1/95)**

Agent: **PYRAMID INSURANCE CENTRE, LTD. (2038)**  
420 Waiakamilo Road, Suite 411  
Honolulu, HI 96817

Issued: 02/02/2015 9:23 AM

By:   
Authorized Representative

UPD (08-07) THESE DECLARATIONS TOGETHER WITH THE COMMON POLICY CONDITIONS, COVERAGE PART DECLARATIONS, COVERAGE PART COVERAGE FORM(S) AND FORMS AND ENDORSEMENTS, IF ANY, ISSUED TO FORM A PART THEREOF, COMPLETE THE ABOVE NUMBERED POLICY.

# EXTENSION OF DECLARATIONS

Policy No. NPP2559058A

Effective Date: 02/01/2015

12:01 AM STANDARD TIME

## FORMS AND ENDORSEMENTS

### The following forms apply to multiple coverage parts

<i>Endt#</i>	<i>Revised</i>	<i>Description of Endorsements</i>
2110	09/10	Service Of Suit
IL0017	11/98	Common Policy Conditions
IL0021	09/08	Nuclear Energy Liability Exclusion Endorsement
L-224	10/10	Punitive Or Exemplary Damages Exclusion
L-610	11/04	Expanded Definition Of Bodily Injury
LLQ100	07/06	Amendatory Endorsement
LLQ368	08/10	Separation Of Insureds Clarification Endorsement
TRIADN	01/08	Disclosure Notice Of Terrorism Insurance Coverage
NPP Jacket	09/10	Non Profit Package Policy Jacket

### The following forms apply to the Commercial Liability coverage part

<i>Endt#</i>	<i>Revised</i>	<i>Description of Endorsements</i>
CG0001	10/01	Commercial General Liability Coverage Form
CG2017	10/93	Additional Insured - Townhouse Associations
CG2147	12/07	Employment-Related Practices Exclusion
L-278	03/14	Independent Contractors/Subcontractors Exclusion
L-500	02/11	Bodily Injury Exclusion - All Employees, Volunteer Workers, Temporary Workers, Casual Laborers, Contractors, And Subcontractors
L-526	06/06	Absolute War Or Terrorism Exclusion
L-532	08/03	Exclusion - Construction Operations
L-549	11/12	Absolute Professional Liability Exclusion
L-599	10/12	Absolute Exclusion for Pollution, Organic Pathogen, Silica, Asbestos and Lead with a Hostile Fire Exception
L-600	08/05	Pre-Existing Or Progressive Damage Or Defect Exclusion
L-729	08/09	Exclusion - Violation Of Statutes That Govern E-Mails, Fax, Phone Calls Or Other Methods Of Sending Material Or Information
L-783	02/14	Amendment Of Liquor Liability Exclusion

### The following forms apply to the Professional Liability coverage part

<i>Endt#</i>	<i>Revised</i>	<i>Description of Endorsements</i>
CAP	02/08	Community Association Professional Liability Insurance Policy
CAP-229	02/08	Failure To Maintain Catastrophic Insurance Exclusion

**COMMERCIAL GENERAL LIABILITY COVERAGE PART DECLARATIONS**

**Policy No. NPP2559058A**

Effective Date: 02/01/2015  
12:01 AM STANDARD TIME

**LIMITS OF INSURANCE**

Each Occurrence Limit	<b>\$1,000,000</b>
Personal & Advertising Injury Limit (Any One Person/Organization)	<b>\$1,000,000</b>
Medical Expense Limit (Any One Person)	<b>\$5,000</b>
Damages To Premises Rented To You (Any One Premises)	<b>\$100,000</b>
Products/Completed Operations Aggregate Limit	<b>Included</b>
General Aggregate Limit	<b>\$2,000,000</b>

**LIABILITY DEDUCTIBLE** **\$0**

**LOCATIONS OF ALL PREMISES YOU OWN, RENT OR OCCUPY**

<i>Location</i>	<i>Address</i>	<i>Territory</i>
1	37 Kaiea Place, Paia, HI 96779	001

**PREMIUM COMPUTATION**

<i>Loc</i>	<i>Classification</i>	<i>Code No.</i>	<i>Premium Basis</i>	<i>Rate</i>		<i>Advance Premium</i>	
				<i>Pr/Co</i>	<i>All Other</i>	<i>Pr/Co</i>	<i>All Other</i>
1	Community Associations - Not-for-Profit only	68500	92 Per Unit	Included	5.350	Included	\$492
1	Additional Insured - Townhouse Association	49950	1 Flat	Included	0.000	Included	Included
<b>MINIMUM PREMIUM FOR GENERAL LIABILITY COVERAGE PART:</b>							<b>\$500</b>
<b>TOTAL PREMIUM FOR GENERAL LIABILITY COVERAGE PART:</b>							<b>\$500 MP</b>
(This Premium may be subject to adjustment.) <b>MP - minimum premium</b>							

Coverage Form(s)/Part(s) and Endorsement(s) made a part of this policy at time of issue:

**See Form EOD (01/95)**

**THESE DECLARATIONS ARE PART OF THE POLICY DECLARATIONS CONTAINING THE NAME OF THE INSURED AND THE POLICY PERIOD.**

**PROFESSIONAL LIABILITY COVERAGE PART DECLARATIONS**

**PLEASE READ YOUR POLICY CAREFULLY.**

**THIS IS A CLAIMS MADE POLICY COVERAGE FORM AND UNLESS OTHERWISE PROVIDED HEREIN, THE COVERAGE OF THIS FORM IS LIMITED TO LIABILITY FOR CLAIMS FIRST MADE DURING THE POLICY PERIOD, OR THE EXTENSION PERIOD, IF APPLICABLE. DEFENSE COSTS SHALL BE APPLIED AGAINST THE RETENTION.**

**No. NPP2559058A**

Effective Date: **02/01/2015**

12:01 AM STANDARD TIME

ITEM I. PARENT ORGANIZATION AND PRINCIPAL ADDRESS

**Kuau Bayview at Paia Homeowners Association  
37 Kaiea Place  
Paia, HI 96779-8108**

ITEM II. POLICY PERIOD: (MM/DD/YYYY) From: 02/01/2015 To: 02/01/2016

**Community Association Professional Liability - D&O/EPL**

ITEM III. LIMITS OF LIABILITY	\$1,000,000	EACH CLAIM
	\$1,000,000	IN THE AGGREGATE
ITEM IV. RETENTION:	\$1,000	EACH CLAIM
ITEM V. PREMIUM:	\$972	

ITEM VI. Coverage Form(s)/Part(s) and Endorsement(s) made a part of this policy at time of issue:  
**See Endorsement EOD (01/95)**

THESE DECLARATIONS ARE PART OF THE POLICY DECLARATIONS CONTAINING THE NAME OF THE INSURED AND THE POLICY PERIOD.

**UNITED STATES LIABILITY INSURANCE GROUP  
WAYNE, PA**

**SERVICE OF SUIT**

Pursuant to any statute of any state, territory or district of the United States which makes provisions therefore, the Company hereby designates the Superintendent, Commissioner or Director of Insurance or other officer specified for that purpose in the Statute, or his successors in office, as our true and lawful attorney upon whom may be served any lawful process in any action, suit or proceeding instituted by or on behalf of the insured(s) or any beneficiary hereunder arising out of this contract of insurance, and hereby designate the below named as the person to whom the said officer is authorized to mail process or a true copy thereof.

It is further agreed that service of process in such suit may be made upon the General Counsel of the Company, or his nominee, at 1190 Devon Park Drive, Wayne, Pennsylvania 19087 and that in any suit instituted against any one of them upon this policy, the Company will abide by the final decision of such Court or any Appellate Court in the event of an appeal.



## COMMON POLICY CONDITIONS

All Coverage Parts included in this policy are subject to the following conditions.

### A. Cancellation

1. The first Named Insured shown in the Declarations may cancel this policy by mailing or delivering to us advance written notice of cancellation.
2. We may cancel this policy by mailing or delivering to the first Named Insured written notice of cancellation at least:
  - a. 10 days before the effective date of cancellation if we cancel for nonpayment of premium; or
  - b. 30 days before the effective date of cancellation if we cancel for any other reason.
3. We will mail or deliver our notice to the first Named Insured's last mailing address known to us.
4. Notice of cancellation will state the effective date of cancellation. The policy period will end on that date.
5. If this policy is cancelled, we will send the first Named Insured any premium refund due. If we cancel, the refund will be pro rata. If the first Named Insured cancels, the refund may be less than pro rata. The cancellation will be effective even if we have not made or offered a refund.
6. If notice is mailed, proof of mailing will be sufficient proof of notice.

### B. Changes

This policy contains all the agreements between you and us concerning the insurance afforded. The first Named Insured shown in the Declarations is authorized to make changes in the terms of this policy with our consent. This policy's terms can be amended or waived only by endorsement issued by us and made a part of this policy.

### C. Examination Of Your Books And Records

We may examine and audit your books and records as they relate to this policy at any time during the policy period and up to three years afterward.

### D. Inspections And Surveys

1. We have the right to:
  - a. Make inspections and surveys at any time;

- b. Give you reports on the conditions we find; and
- c. Recommend changes.

2. We are not obligated to make any inspections, surveys, reports or recommendations and any such actions we do undertake relate only to insurability and the premiums to be charged. We do not make safety inspections. We do not undertake to perform the duty of any person or organization to provide for the health or safety of workers or the public. And we do not warrant that conditions:
  - a. Are safe or healthful; or
  - b. Comply with laws, regulations, codes or standards.

3. Paragraphs 1. and 2. of this condition apply not only to us, but also to any rating, advisory, rate service or similar organization which makes insurance inspections, surveys, reports or recommendations.

4. Paragraph 2. of this condition does not apply to any inspections, surveys, reports or recommendations we may make relative to certification, under state or municipal statutes, ordinances or regulations, of boilers, pressure vessels or elevators.

### E. Premiums

The first Named Insured shown in the Declarations:

1. Is responsible for the payment of all premiums; and
2. Will be the payee for any return premiums we pay.

### F. Transfer Of Your Rights And Duties Under This Policy

Your rights and duties under this policy may not be transferred without our written consent except in the case of death of an individual named insured.

If you die, your rights and duties will be transferred to your legal representative but only while acting within the scope of duties as your legal representative. Until your legal representative is appointed, anyone having proper temporary custody of your property will have your rights and duties but only with respect to that property.

**THIS ENDORSEMENT CHANGES THE POLICY. PLEASE READ IT CAREFULLY.**

## **NUCLEAR ENERGY LIABILITY EXCLUSION ENDORSEMENT**

**(Broad Form)**

This endorsement modifies insurance provided under the following:

COMMERCIAL AUTOMOBILE COVERAGE PART  
 COMMERCIAL GENERAL LIABILITY COVERAGE PART  
 FARM COVERAGE PART  
 LIQUOR LIABILITY COVERAGE PART  
 MEDICAL PROFESSIONAL LIABILITY COVERAGE PART  
 OWNERS AND CONTRACTORS PROTECTIVE LIABILITY COVERAGE PART  
 POLLUTION LIABILITY COVERAGE PART  
 PRODUCTS/COMPLETED OPERATIONS LIABILITY COVERAGE PART  
 RAILROAD PROTECTIVE LIABILITY COVERAGE PART  
 UNDERGROUND STORAGE TANK POLICY

1. The insurance does not apply:
  - A. Under any Liability Coverage, to "bodily injury" or "property damage":
    - (1) With respect to which an "insured" under the policy is also an insured under a nuclear energy liability policy issued by Nuclear Energy Liability Insurance Association, Mutual Atomic Energy Liability Underwriters, Nuclear Insurance Association of Canada or any of their successors, or would be an insured under any such policy but for its termination upon exhaustion of its limit of liability; or
    - (2) Resulting from the "hazardous properties" of "nuclear material" and with respect to which (a) any person or organization is required to maintain financial protection pursuant to the Atomic Energy Act of 1954, or any law amendatory thereof, or (b) the "insured" is, or had this policy not been issued would be, entitled to indemnity from the United States of America, or any agency thereof, under any agreement entered into by the United States of America, or any agency thereof, with any person or organization.
  - B. Under any Medical Payments coverage, to expenses incurred with respect to "bodily injury" resulting from the "hazardous properties" of "nuclear material" and arising out of the operation of a "nuclear facility" by any person or organization.
  - C. Under any Liability Coverage, to "bodily injury" or "property damage" resulting from "hazardous properties" of "nuclear material", if:
    - (1) The "nuclear material" (a) is at any "nuclear facility" owned by, or operated by or on behalf of, an "insured" or (b) has been discharged or dispersed therefrom;
    - (2) The "nuclear material" is contained in "spent fuel" or "waste" at any time possessed, handled, used, processed, stored, transported or disposed of, by or on behalf of an "insured"; or
    - (3) The "bodily injury" or "property damage" arises out of the furnishing by an "insured" of services, materials, parts or equipment in connection with the planning, construction, maintenance, operation or use of any "nuclear facility", but if such facility is located within the United States of America, its territories or possessions or Canada, this exclusion (3) applies only to "property damage" to such "nuclear facility" and any property thereat.
2. As used in this endorsement:
 

"Hazardous properties" includes radioactive, toxic or explosive properties.

"Nuclear material" means "source material", "special nuclear material" or "by-product material".

"Source material", "special nuclear material", and "by-product material" have the meanings given them in the Atomic Energy Act of 1954 or in any law amendatory thereof.

"Spent fuel" means any fuel element or fuel component, solid or liquid, which has been used or exposed to radiation in a "nuclear reactor".

"Waste" means any waste material **(a)** containing "by-product material" other than the tailings or wastes produced by the extraction or concentration of uranium or thorium from any ore processed primarily for its "source material" content, and **(b)** resulting from the operation by any person or organization of any "nuclear facility" included under the first two paragraphs of the definition of "nuclear facility".

"Nuclear facility" means:

- (a)** Any "nuclear reactor";
- (b)** Any equipment or device designed or used for **(1)** separating the isotopes of uranium or plutonium, **(2)** processing or utilizing "spent fuel", or **(3)** handling, processing or packaging "waste";

**(c)** Any equipment or device used for the processing, fabricating or alloying of "special nuclear material" if at any time the total amount of such material in the custody of the "insured" at the premises where such equipment or device is located consists of or contains more than 25 grams of plutonium or uranium 233 or any combination thereof, or more than 250 grams of uranium 235;

**(d)** Any structure, basin, excavation, premises or place prepared or used for the storage or disposal of "waste";

and includes the site on which any of the foregoing is located, all operations conducted on such site and all premises used for such operations.

"Nuclear reactor" means any apparatus designed or used to sustain nuclear fission in a self-supporting chain reaction or to contain a critical mass of fissionable material.

"Property damage" includes all forms of radioactive contamination of property.

**UNITED STATES LIABILITY INSURANCE GROUP  
WAYNE, PENNSYLVANIA**

This endorsement modifies insurance provided under the following:

**COMMERCIAL GENERAL LIABILITY COVERAGE FORM  
LIQUOR LIABILITY COVERAGE FORM  
COMMERCIAL UMBRELLA POLICY  
EXCESS LIABILITY POLICY**

**PUNITIVE OR EXEMPLARY DAMAGES EXCLUSION**

Regardless of any other provision of this policy, this policy does not apply to punitive or exemplary damages.

If a "suit" is brought against any insured, and falls within the coverage provided by the policy, seeking both compensatory damages (damages for economic loss and pain and suffering) and punitive or exemplary damages (damages as a means of punishment), no coverage shall be provided by this policy for any costs, interest, defense costs, attorney or legal fees of any type or damages attributable to punitive or exemplary damages.

All other terms and conditions of this policy remain unchanged. This endorsement is a part of your policy and takes effect on the effective date of your policy unless another effective date is shown.

**UNITED STATES LIABILITY INSURANCE GROUP  
WAYNE, PENNSYLVANIA**

This Endorsement modifies insurance provided under the following:

**COMMERCIAL GENERAL LIABILITY COVERAGE FORM  
BUSINESSOWNERS COVERAGE FORM  
LIQUOR LIABILITY COVERAGE FORM**

**EXPANDED DEFINITION OF BODILY INJURY**

The Definition of "bodily injury" is removed in its entirety and replaced with the following:

1. "Bodily injury" means:
  - a. bodily injury,
  - b. sickness,
  - c. disease; or
  - d. mental anguish or emotional distress arising out of a., b., or c., above,

sustained by a person, including death resulting from any of these at any time.

All other terms and conditions of this policy remain unchanged. This endorsement is a part of your policy and takes effect on the effective date of your policy unless another effective date is shown.

**UNITED STATES LIABILITY INSURANCE GROUP  
WAYNE, PENNSYLVANIA**

This endorsement modifies insurance provided under the following:

**COMMERCIAL GENERAL LIABILITY COVERAGE FORM  
LIQUOR LIABILITY COVERAGE FORM**

Throughout this policy, with the exception of **SECTION II – WHO IS AN INSURED;** when the word “insured(s)” is used it shall mean “any insured(s)”.

All other terms and conditions of this policy remain unchanged. This endorsement is a part of your policy and takes effect on the effective date of your policy unless another effective date is shown.

**UNITED STATES LIABILITY INSURANCE GROUP  
WAYNE, PENNSYLVANIA**

This endorsement modifies insurance provided under the following:

**COMMERCIAL GENERAL LIABILITY COVERAGE FORM  
LIQUOR LIABILITY COVERAGE FORM**

**SEPARATION OF INSUREDS CLARIFICATION ENDORSEMENT**

It is agreed that **SECTION IV – COMMERCIAL GENERAL LIABILITY CONDITIONS** and **SECTION IV – LIQUOR LIABILITY CONDITIONS; 7. Separation Of Insureds** is deleted in its entirety and replaced with the following:

**7. Separation of Insureds**

The Limits of Insurance of this policy applies:

- a. As if each Named Insured were the only Named Insured; and
- b. Separately to each insured against whom claim is made or “suit” is brought, but nothing in this endorsement shall serve to increase the Limits of Insurance beyond the Per occurrence, per person, per premises, per common cause, aggregate or any similar limit stipulated in the Declarations.

All other terms and conditions of this policy remain unchanged. This endorsement is a part of your policy and takes effect on the effective date of your policy unless another effective date is shown.

## DISCLOSURE NOTICE OF TERRORISM INSURANCE COVERAGE

You are hereby notified that under the Terrorism Risk Insurance Program Reauthorization Act of 2007 ("the Act"), effective December 26th, 2007, you now have a right to purchase insurance coverage for losses arising out of acts of terrorism, as defined in Section 102(1) of the Act: The term "act of terrorism" means any act that is certified by the Secretary of the Treasury, in concurrence with the Secretary of State, and the Attorney General of the United States, to be an act of terrorism; to be a violent act or an act that is dangerous to human life, property, or infrastructure; to have resulted in damage within the United States, or outside the United States in the case of an air carrier or vessel or the premises of a United States mission; and to have been committed by an individual or individuals, as part of an effort to coerce the civilian population of the United States or to influence the policy or affect the conduct of the United States or to influence the policy or affect the conduct of the United States Government by coercion.

You should know that any coverage for losses caused by certified acts of terrorism is partially reimbursed by the United States under a formula established by federal law. Under this formula, the United States pays 85% of covered terrorism losses exceeding the statutorily established deductible paid by the insurance company providing the coverage for each Program Year (January 1 through December 31st). The premium charged for this coverage is provided below and does not include any charges for the portion of loss covered by the federal government under the Act.

Coverage for "insured losses", as defined in the Act, is subject to the coverage terms, conditions, amounts and limits in this policy applicable to losses arising from events other than acts of terrorism.

You should know that the Act, as amended, contains a \$100 billion cap that limits U.S. Government reimbursement, as well as insurers' liability, for losses resulting from certified acts of terrorism. When the amount of such losses for all insurers exceeds \$100 billion, your coverage may be reduced.

You should know that, under federal law, you are not required to purchase coverage for losses caused by certified acts of terrorism.

### **REJECTION OR SELECTION OF TERRORISM INSURANCE COVERAGE**

Please "X" one of the boxes below and return this notice to the Company.

<b>X</b>	<b>I decline to purchase Terrorism Coverage. I understand that I will have no coverage for losses arising from acts of Terrorism.</b>
	<b>I elect to purchase coverage for certified acts of Terrorism for a premium of \$ _____</b>

**Note: if you do not respond to our offer and do not return this notice to the Company, you will have no Terrorism Coverage under this policy.**

Kuau Bayview at Paia Homeowners Association

\_\_\_\_\_  
Applicant's Name (Print)

\_\_\_\_\_  
Name Insured

\_\_\_\_\_  
Signature on file with the Company

\_\_\_\_\_  
On file with the Company

Authorized Signature

Date

United States Liability Insurance Co. - U.S. Underwriters Insurance Co. - Mt. Vernon Fire Insurance Co. - Mt. Vernon Specialty Insurance Co.  
**TRIADN (01-08)**



# COMMERCIAL GENERAL LIABILITY COVERAGE FORM

Various provisions in this policy restrict coverage. Read the entire policy carefully to determine rights, duties and what is and is not covered.

Throughout this policy the words "you" and "your" refer to the Named Insured shown in the Declarations, and any other person or organization qualifying as a Named Insured under this policy. The words "we", "us" and "our" refer to the company providing this insurance.

The word "insured" means any person or organization qualifying as such under Section II – Who Is An Insured.

Other words and phrases that appear in quotation marks have special meaning. Refer to Section V – Definitions.

## SECTION I – COVERAGES

### COVERAGE A BODILY INJURY AND PROPERTY DAMAGE LIABILITY

#### 1. Insuring Agreement

a. We will pay those sums that the insured becomes legally obligated to pay as damages because of "bodily injury" or "property damage" to which this insurance applies. We will have the right and duty to defend the insured against any "suit" seeking those damages. However, we will have no duty to defend the insured against any "suit" seeking damages for "bodily injury" or "property damage" to which this insurance does not apply. We may, at our discretion, investigate any "occurrence" and settle any claim or "suit" that may result. But:

- (1) The amount we will pay for damages is limited as described in Section III – Limits Of Insurance; and
- (2) Our right and duty to defend ends when we have used up the applicable limit of insurance in the payment of judgments or settlements under Coverages A or B or medical expenses under Coverage C.

No other obligation or liability to pay sums or perform acts or services is covered unless explicitly provided for under Supplementary Payments – Coverages A and B.

b. This insurance applies to "bodily injury" and "property damage" only if:

- (1) The "bodily injury" or "property damage" is caused by an "occurrence" that takes place in the "coverage territory";
- (2) The "bodily injury" or "property damage" occurs during the policy period; and
- (3) Prior to the policy period, no insured listed under Paragraph 1. of Section II – Who Is An Insured and no "employee" authorized by you to give or receive notice of an "occurrence" or claim, knew that the "bodily injury" or "property damage" had occurred, in whole or in part. If such a listed insured or authorized "employee" knew, prior to the policy period, that the "bodily injury" or "property damage" occurred, then any continuation, change or resumption of such "bodily injury" or "property damage" during or after the policy period will be deemed to have been known prior to the policy period.

c. "Bodily injury" or "property damage" which occurs during the policy period and was not, prior to the policy period, known to have occurred by any insured listed under Paragraph 1. of Section II – Who Is An Insured or any "employee" authorized by you to give or receive notice of an "occurrence" or claim, includes any continuation, change or resumption of that "bodily injury" or "property damage" after the end of the policy period.

d. "Bodily injury" or "property damage" will be deemed to have been known to have occurred at the earliest time when any insured listed under Paragraph 1. of Section II – Who Is An Insured or any "employee" authorized by you to give or receive notice of an "occurrence" or claim:

- (1) Reports all, or any part, of the "bodily injury" or "property damage" to us or any other insurer;
- (2) Receives a written or verbal demand or claim for damages because of the "bodily injury" or "property damage"; or
- (3) Becomes aware by any other means that "bodily injury" or "property damage" has occurred or has begun to occur.

- e. Damages because of "bodily injury" include damages claimed by any person or organization for care, loss of services or death resulting at any time from the "bodily injury".

## 2. Exclusions

This insurance does not apply to:

### a. Expected Or Intended Injury

"Bodily injury" or "property damage" expected or intended from the standpoint of the insured. This exclusion does not apply to "bodily injury" resulting from the use of reasonable force to protect persons or property.

### b. Contractual Liability

"Bodily injury" or "property damage" for which the insured is obligated to pay damages by reason of the assumption of liability in a contract or agreement. This exclusion does not apply to liability for damages:

- (1) That the insured would have in the absence of the contract or agreement; or
- (2) Assumed in a contract or agreement that is an "insured contract", provided the "bodily injury" or "property damage" occurs subsequent to the execution of the contract or agreement. Solely for the purposes of liability assumed in an "insured contract", reasonable attorney fees and necessary litigation expenses incurred by or for a party other than an insured are deemed to be damages because of "bodily injury" or "property damage", provided:
  - (a) Liability to such party for, or for the cost of, that party's defense has also been assumed in the same "insured contract"; and
  - (b) Such attorney fees and litigation expenses are for defense of that party against a civil or alternative dispute resolution proceeding in which damages to which this insurance applies are alleged.

### c. Liquor Liability

"Bodily injury" or "property damage" for which any insured may be held liable by reason of:

- (1) Causing or contributing to the intoxication of any person;
- (2) The furnishing of alcoholic beverages to a person under the legal drinking age or under the influence of alcohol; or
- (3) Any statute, ordinance or regulation relating to the sale, gift, distribution or use of alcoholic beverages.

This exclusion applies only if you are in the business of manufacturing, distributing, selling, serving or furnishing alcoholic beverages.

### d. Workers' Compensation And Similar Laws

Any obligation of the insured under a workers' compensation, disability benefits or unemployment compensation law or any similar law.

### e. Employer's Liability

"Bodily injury" to:

- (1) An "employee" of the insured arising out of and in the course of:
  - (a) Employment by the insured; or
  - (b) Performing duties related to the conduct of the insured's business; or
- (2) The spouse, child, parent, brother or sister of that "employee" as a consequence of Paragraph (1) above.

This exclusion applies:

- (1) Whether the insured may be liable as an employer or in any other capacity; and
- (2) To any obligation to share damages with or repay someone else who must pay damages because of the injury.

This exclusion does not apply to liability assumed by the insured under an "insured contract".

## f. Pollution

- (1) "Bodily injury" or "property damage" arising out of the actual, alleged or threatened discharge, dispersal, seepage, migration, release or escape of "pollutants":
  - (a) At or from any premises, site or location which is or was at any time owned or occupied by, or rented or loaned to, any insured. However, this subparagraph does not apply to:
    - (i) "Bodily injury" if sustained within a building and caused by smoke, fumes, vapor or soot from equipment used to heat that building;
    - (ii) "Bodily injury" or "property damage" for which you may be held liable, if you are a contractor and the owner or lessee of such premises, site or location has been added to your policy as an additional insured with respect to your ongoing operations performed for that additional insured at that premises, site or location and such premises, site or location is not and never was owned or occupied by, or rented or loaned to, any insured, other than that additional insured; or
    - (iii) "Bodily injury" or "property damage" arising out of heat, smoke or fumes from a "hostile fire";
  - (b) At or from any premises, site or location which is or was at any time used by or for any insured or others for the handling, storage, disposal, processing or treatment of waste;
  - (c) Which are or were at any time transported, handled, stored, treated, disposed of, or processed as waste by or for:
    - (i) Any insured; or
    - (ii) Any person or organization for whom you may be legally responsible; or
- (d) At or from any premises, site or location on which any insured or any contractors or subcontractors working directly or indirectly on any insured's behalf are performing operations if the "pollutants" are brought on or to the premises, site or location in connection with such operations by such insured, contractor or subcontractor. However, this subparagraph does not apply to:
  - (i) "Bodily injury" or "property damage" arising out of the escape of fuels, lubricants or other operating fluids which are needed to perform the normal electrical, hydraulic or mechanical functions necessary for the operation of "mobile equipment" or its parts, if such fuels, lubricants or other operating fluids escape from a vehicle part designed to hold, store or receive them. This exception does not apply if the "bodily injury" or "property damage" arises out of the intentional discharge, dispersal or release of the fuels, lubricants or other operating fluids, or if such fuels, lubricants or other operating fluids are brought on or to the premises, site or location with the intent that they be discharged, dispersed or released as part of the operations being performed by such insured, contractor or subcontractor;
  - (ii) "Bodily injury" or "property damage" sustained within a building and caused by the release of gases, fumes or vapors from materials brought into that building in connection with operations being performed by you or on your behalf by a contractor or subcontractor; or
  - (iii) "Bodily injury" or "property damage" arising out of heat, smoke or fumes from a "hostile fire".

- (e) At or from any premises, site or location on which any insured or any contractors or subcontractors working directly or indirectly on any insured's behalf are performing operations if the operations are to test for, monitor, clean up, remove, contain, treat, detoxify or neutralize, or in any way respond to, or assess the effects of, "pollutants".
- (2) Any loss, cost or expense arising out of any:
- (a) Request, demand, order or statutory or regulatory requirement that any insured or others test for, monitor, clean up, remove, contain, treat, detoxify or neutralize, or in any way respond to, or assess the effects of, "pollutants"; or
  - (b) Claim or "suit" by or on behalf of a governmental authority for damages because of testing for, monitoring, cleaning up, removing, containing, treating, detoxifying or neutralizing, or in any way responding to, or assessing the effects of, "pollutants".

However, this paragraph does not apply to liability for damages because of "property damage" that the insured would have in the absence of such request, demand, order or statutory or regulatory requirement, or such claim or "suit" by or on behalf of a governmental authority.

**g. Aircraft, Auto Or Watercraft**

"Bodily injury" or "property damage" arising out of the ownership, maintenance, use or entrustment to others of any aircraft, "auto" or watercraft owned or operated by or rented or loaned to any insured. Use includes operation and "loading or unloading".

This exclusion applies even if the claims against any insured allege negligence or other wrongdoing in the supervision, hiring, employment, training or monitoring of others by that insured, if the "occurrence" which caused the "bodily injury" or "property damage" involved the ownership, maintenance, use or entrustment to others of any aircraft, "auto" or watercraft that is owned or operated by or rented or loaned to any insured.

This exclusion does not apply to:

- (1) A watercraft while ashore on premises you own or rent;
- (2) A watercraft you do not own that is:
  - (a) Less than 26 feet long; and
  - (b) Not being used to carry persons or property for a charge;

- (3) Parking an "auto" on, or on the ways next to, premises you own or rent, provided the "auto" is not owned by or rented or loaned to you or the insured;
- (4) Liability assumed under any "insured contract" for the ownership, maintenance or use of aircraft or watercraft; or
- (5) "Bodily injury" or "property damage" arising out of the operation of any of the equipment listed in Paragraph f.(2) or f.(3) of the definition of "mobile equipment".

**h. Mobile Equipment**

"Bodily injury" or "property damage" arising out of:

- (1) The transportation of "mobile equipment" by an "auto" owned or operated by or rented or loaned to any insured; or
- (2) The use of "mobile equipment" in, or while in practice for, or while being prepared for, any prearranged racing, speed, demolition, or stunting activity.

**i. War**

"Bodily injury" or "property damage" due to war, whether or not declared, or any act or condition incident to war. War includes civil war, insurrection, rebellion or revolution. This exclusion applies only to liability assumed under a contract or agreement.

**j. Damage To Property**

"Property damage" to:

- (1) Property you own, rent, or occupy, including any costs or expenses incurred by you, or any other person, organization or entity, for repair, replacement, enhancement, restoration or maintenance of such property for any reason, including prevention of injury to a person or damage to another's property;
- (2) Premises you sell, give away or abandon, if the "property damage" arises out of any part of those premises;
- (3) Property loaned to you;
- (4) Personal property in the care, custody or control of the insured;
- (5) That particular part of real property on which you or any contractors or subcontractors working directly or indirectly on your behalf are performing operations, if the "property damage" arises out of those operations; or
- (6) That particular part of any property that must be restored, repaired or replaced because "your work" was incorrectly performed on it.

Paragraphs (1), (3) and (4) of this exclusion do not apply to "property damage" (other than damage by fire) to premises, including the contents of such premises, rented to you for a period of 7 or fewer consecutive days. A separate limit of insurance applies to Damage To Premises Rented To You as described in Section III – Limits Of Insurance.

Paragraph (2) of this exclusion does not apply if the premises are "your work" and were never occupied, rented or held for rental by you.

Paragraphs (3), (4), (5) and (6) of this exclusion do not apply to liability assumed under a side-track agreement.

Paragraph (6) of this exclusion does not apply to "property damage" included in the "products-completed operations hazard".

**k. Damage To Your Product**

"Property damage" to "your product" arising out of it or any part of it.

**l. Damage To Your Work**

"Property damage" to "your work" arising out of it or any part of it and included in the "products-completed operations hazard".

This exclusion does not apply if the damaged work or the work out of which the damage arises was performed on your behalf by a sub-contractor.

**m. Damage To Impaired Property Or Property Not Physically Injured**

"Property damage" to "impaired property" or property that has not been physically injured, arising out of:

- (1) A defect, deficiency, inadequacy or dangerous condition in "your product" or "your work"; or
- (2) A delay or failure by you or anyone acting on your behalf to perform a contract or agreement in accordance with its terms.

This exclusion does not apply to the loss of use of other property arising out of sudden and accidental physical injury to "your product" or "your work" after it has been put to its intended use.

**n. Recall Of Products, Work Or Impaired Property**

Damages claimed for any loss, cost or expense incurred by you or others for the loss of use, withdrawal, recall, inspection, repair, replacement, adjustment, removal or disposal of:

- (1) "Your product";
- (2) "Your work"; or
- (3) "Impaired property";

if such product, work, or property is withdrawn or recalled from the market or from use by any person or organization because of a known or suspected defect, deficiency, inadequacy or dangerous condition in it.

**o. Personal And Advertising Injury**

"Bodily injury" arising out of "personal and advertising injury".

Exclusions c. through n. do not apply to damage by fire to premises while rented to you or temporarily occupied by you with permission of the owner. A separate limit of insurance applies to this coverage as described in Section III – Limits Of Insurance.

**COVERAGE B PERSONAL AND ADVERTISING INJURY LIABILITY**

**1. Insuring Agreement**

a. We will pay those sums that the insured becomes legally obligated to pay as damages because of "personal and advertising injury" to which this insurance applies. We will have the right and duty to defend the insured against any "suit" seeking those damages. However, we will have no duty to defend the insured against any "suit" seeking damages for "personal and advertising injury" to which this insurance does not apply. We may, at our discretion, investigate any offense and settle any claim or "suit" that may result. But:

- (1) The amount we will pay for damages is limited as described in Section III – Limits Of Insurance ; and
- (2) Our right and duty to defend end when we have used up the applicable limit of insurance in the payment of judgments or settlements under Coverages A or B or medical expenses under Coverage C.

No other obligation or liability to pay sums or perform acts or services is covered unless explicitly provided for under Supplementary Payments – Coverages **A** and **B**.

- b.** This insurance applies to "personal and advertising injury" caused by an offense arising out of your business but only if the offense was committed in the "coverage territory" during the policy period.

## **2. Exclusions**

This insurance does not apply to:

### **a. Knowing Violation Of Rights Of Another**

"Personal and advertising injury" caused by or at the direction of the insured with the knowledge that the act would violate the rights of another and would inflict "personal and advertising injury".

### **b. Material Published With Knowledge Of Falsity**

"Personal and advertising injury" arising out of oral or written publication of material, if done by or at the direction of the insured with knowledge of its falsity.

### **c. Material Published Prior To Policy Period**

"Personal and advertising injury" arising out of oral or written publication of material whose first publication took place before the beginning of the policy period.

### **d. Criminal Acts**

"Personal and advertising injury" arising out of a criminal act committed by or at the direction of the insured.

### **e. Contractual Liability**

"Personal and advertising injury" for which the insured has assumed liability in a contract or agreement. This exclusion does not apply to liability for damages that the insured would have in the absence of the contract or agreement.

### **f. Breach Of Contract**

"Personal and advertising injury" arising out of a breach of contract, except an implied contract to use another's advertising idea in your "advertisement".

### **g. Quality Or Performance Of Goods – Failure To Conform To Statements**

"Personal and advertising injury" arising out of the failure of goods, products or services to conform with any statement of quality or performance made in your "advertisement".

### **h. Wrong Description Of Prices**

"Personal and advertising injury" arising out of the wrong description of the price of goods, products or services stated in your "advertisement".

### **i. Infringement Of Copyright, Patent, Trademark Or Trade Secret**

"Personal and advertising injury" arising out of the infringement of copyright, patent, trademark, trade secret or other intellectual property rights.

However, this exclusion does not apply to infringement, in your "advertisement", of copyright, trade dress or slogan.

### **j. Insureds In Media And Internet Type Businesses**

"Personal and advertising injury" committed by an insured whose business is:

- (1)** Advertising, broadcasting, publishing or telecasting;
- (2)** Designing or determining content of websites for others; or
- (3)** An Internet search, access, content or service provider.

However, this exclusion does not apply to Paragraphs **14.a.**, **b.** and **c.** of "personal and advertising injury" under the Definitions Section.

For the purposes of this exclusion, the placing of frames, borders or links, or advertising, for you or others anywhere on the Internet, is not by itself, considered the business of advertising, broadcasting, publishing or telecasting.

### **k. Electronic Chatrooms Or Bulletin Boards**

"Personal and advertising injury" arising out of an electronic chatroom or bulletin board the insured hosts, owns, or over which the insured exercises control.

**I. Unauthorized Use Of Another's Name Or Product**

"Personal and advertising injury" arising out of the unauthorized use of another's name or product in your e-mail address, domain name or metatag, or any other similar tactics to mislead another's potential customers.

**m. Pollution**

"Personal and advertising injury" arising out of the actual, alleged or threatened discharge, dispersal, seepage, migration, release or escape of "pollutants" at any time.

**n. Pollution-Related**

Any loss, cost or expense arising out of any:

- (1) Request, demand or order that any insured or others test for, monitor, clean up, remove, contain, treat, detoxify or neutralize, or in any way respond to, or assess the effects of, "pollutants"; or
- (2) Claim or suit by or on behalf of a governmental authority for damages because of testing for, monitoring, cleaning up, removing, containing, treating, detoxifying or neutralizing, or in any way responding to, or assessing the effects of, "pollutants".

**COVERAGE C MEDICAL PAYMENTS**

**1. Insuring Agreement**

a. We will pay medical expenses as described below for "bodily injury" caused by an accident:

- (1) On premises you own or rent;
  - (2) On ways next to premises you own or rent; or
  - (3) Because of your operations;
- provided that:

- (1) The accident takes place in the "coverage territory" and during the policy period;
- (2) The expenses are incurred and reported to us within one year of the date of the accident; and
- (3) The injured person submits to examination, at our expense, by physicians of our choice as often as we reasonably require.

b. We will make these payments regardless of fault. These payments will not exceed the applicable limit of insurance. We will pay reasonable expenses for:

- (1) First aid administered at the time of an accident;

- (2) Necessary medical, surgical, x-ray and dental services, including prosthetic devices; and
- (3) Necessary ambulance, hospital, professional nursing and funeral services.

**2. Exclusions**

We will not pay expenses for "bodily injury":

**a. Any Insured**

To any insured, except "volunteer workers".

**b. Hired Person**

To a person hired to do work for or on behalf of any insured or a tenant of any insured.

**c. Injury On Normally Occupied Premises**

To a person injured on that part of premises you own or rent that the person normally occupies.

**d. Workers Compensation And Similar Laws**

To a person, whether or not an "employee" of any insured, if benefits for the "bodily injury" are payable or must be provided under a workers' compensation or disability benefits law or a similar law.

**e. Athletics Activities**

To a person injured while taking part in athletics.

**f. Products-Completed Operations Hazard**

Included within the "products-completed operations hazard".

**g. Coverage A Exclusions**

Excluded under Coverage A.

**h. War**

Due to war, whether or not declared, or any act or condition incident to war. War includes civil war, insurrection, rebellion or revolution.

**SUPPLEMENTARY PAYMENTS – COVERAGES A AND B**

1. We will pay, with respect to any claim we investigate or settle, or any "suit" against an insured we defend:

- a. All expenses we incur.

- b. Up to \$250 for cost of bail bonds required because of accidents or traffic law violations arising out of the use of any vehicle to which the Bodily Injury Liability Coverage applies. We do not have to furnish these bonds.
- c. The cost of bonds to release attachments, but only for bond amounts within the applicable limit of insurance. We do not have to furnish these bonds.
- d. All reasonable expenses incurred by the insured at our request to assist us in the investigation or defense of the claim or "suit", including actual loss of earnings up to \$250 a day because of time off from work.
- e. All costs taxed against the insured in the "suit".
- f. Prejudgment interest awarded against the insured on that part of the judgment we pay. If we make an offer to pay the applicable limit of insurance, we will not pay any prejudgment interest based on that period of time after the offer.
- g. All interest on the full amount of any judgment that accrues after entry of the judgment and before we have paid, offered to pay, or deposited in court the part of the judgment that is within the applicable limit of insurance.

These payments will not reduce the limits of insurance.

- 2. If we defend an insured against a "suit" and an indemnitee of the insured is also named as a party to the "suit", we will defend that indemnitee if all of the following conditions are met:
  - a. The "suit" against the indemnitee seeks damages for which the insured has assumed the liability of the indemnitee in a contract or agreement that is an "insured contract";
  - b. This insurance applies to such liability assumed by the insured;
  - c. The obligation to defend, or the cost of the defense of, that indemnitee, has also been assumed by the insured in the same "insured contract";
  - d. The allegations in the "suit" and the information we know about the "occurrence" are such that no conflict appears to exist between the interests of the insured and the interests of the indemnitee;

- e. The indemnitee and the insured ask us to conduct and control the defense of that indemnitee against such "suit" and agree that we can assign the same counsel to defend the insured and the indemnitee; and
- f. The indemnitee:
  - (1) Agrees in writing to:
    - (a) Cooperate with us in the investigation, settlement or defense of the "suit";
    - (b) Immediately send us copies of any demands, notices, summonses or legal papers received in connection with the "suit";
    - (c) Notify any other insurer whose coverage is available to the indemnitee; and
    - (d) Cooperate with us with respect to coordinating other applicable insurance available to the indemnitee; and
  - (2) Provides us with written authorization to:
    - (a) Obtain records and other information related to the "suit"; and
    - (b) Conduct and control the defense of the indemnitee in such "suit".

So long as the above conditions are met, attorneys' fees incurred by us in the defense of that indemnitee, necessary litigation expenses incurred by us and necessary litigation expenses incurred by the indemnitee at our request will be paid as Supplementary Payments. Notwithstanding the provisions of Paragraph **2.b.(2)** of Section **I – Coverage A – Bodily Injury And Property Damage Liability**, such payments will not be deemed to be damages for "bodily injury" and "property damage" and will not reduce the limits of insurance.

Our obligation to defend an insured's indemnitee and to pay for attorneys' fees and necessary litigation expenses as Supplementary Payments ends when:

- a. We have used up the applicable limit of insurance in the payment of judgments or settlements; or
- b. The conditions set forth above, or the terms of the agreement described in Paragraph **f.** above, are no longer met.



## SECTION II – WHO IS AN INSURED

1. If you are designated in the Declarations as:
  - a. An individual, you and your spouse are insureds, but only with respect to the conduct of a business of which you are the sole owner.
  - b. A partnership or joint venture, you are an insured. Your members, your partners, and their spouses are also insureds, but only with respect to the conduct of your business.
  - c. A limited liability company, you are an insured. Your members are also insureds, but only with respect to the conduct of your business. Your managers are insureds, but only with respect to their duties as your managers.
  - d. An organization other than a partnership, joint venture or limited liability company, you are an insured. Your "executive officers" and directors are insureds, but only with respect to their duties as your officers or directors. Your stockholders are also insureds, but only with respect to their liability as stockholders.
  - e. A trust, you are an insured. Your trustees are also insureds, but only with respect to their duties as trustees.
2. Each of the following is also an insured:
  - a. Your "volunteer workers" only while performing duties related to the conduct of your business, or your "employees", other than either your "executive officers" (if you are an organization other than a partnership, joint venture or limited liability company) or your managers (if you are a limited liability company), but only for acts within the scope of their employment by you or while performing duties related to the conduct of your business. However, none of these "employees" or "volunteer workers" are insureds for:
    - (1) "Bodily injury" or "personal and advertising injury":
      - (a) To you, to your partners or members (if you are a partnership or joint venture), to your members (if you are a limited liability company), to a co-"employee" while in the course of his or her employment or performing duties related to the conduct of your business, or to your other "volunteer workers" while performing duties related to the conduct of your business;
      - (b) To the spouse, child, parent, brother or sister of that co-"employee" or "volunteer worker" as a consequence of Paragraph (1)(a) above;
      - (c) For which there is any obligation to share damages with or repay someone else who must pay damages because of the injury described in Paragraphs (1)(a) or (b) above; or
      - (d) Arising out of his or her providing or failing to provide professional health care services.
    - (2) "Property damage" to property:
      - (a) Owned, occupied or used by,
      - (b) Rented to, in the care, custody or control of, or over which physical control is being exercised for any purpose by you, any of your "employees", "volunteer workers", any partner or member (if you are a partnership or joint venture), or any member (if you are a limited liability company).
  - b. Any person (other than your "employee" or "volunteer worker"), or any organization while acting as your real estate manager.
  - c. Any person or organization having proper temporary custody of your property if you die, but only:
    - (1) With respect to liability arising out of the maintenance or use of that property; and
    - (2) Until your legal representative has been appointed.
  - d. Your legal representative if you die, but only with respect to duties as such. That representative will have all your rights and duties under this Coverage Part.
3. With respect to "mobile equipment" registered in your name under any motor vehicle registration law, any person is an insured while driving such equipment along a public highway with your permission. Any other person or organization responsible for the conduct of such person is also an insured, but only with respect to liability arising out of the operation of the equipment, and only if no other insurance of any kind is available to that person or organization for this liability. However, no person or organization is an insured with respect to:
  - a. "Bodily injury" to a co-"employee" of the person driving the equipment; or
  - b. "Property damage" to property owned by, rented to, in the charge of or occupied by you or the employer of any person who is an insured under this provision.

4. Any organization you newly acquire or form, other than a partnership, joint venture or limited liability company, and over which you maintain ownership or majority interest, will qualify as a Named Insured if there is no other similar insurance available to that organization. However:
  - a. Coverage under this provision is afforded only until the 90th day after you acquire or form the organization or the end of the policy period, whichever is earlier;
  - b. Coverage **A** does not apply to "bodily injury" or "property damage" that occurred before you acquired or formed the organization; and
  - c. Coverage **B** does not apply to "personal and advertising injury" arising out of an offense committed before you acquired or formed the organization.

No person or organization is an insured with respect to the conduct of any current or past partnership, joint venture or limited liability company that is not shown as a Named Insured in the Declarations.

### SECTION III – LIMITS OF INSURANCE

1. The Limits of Insurance shown in the Declarations and the rules below fix the most we will pay regardless of the number of:
  - a. Insureds;
  - b. Claims made or "suits" brought; or
  - c. Persons or organizations making claims or bringing "suits".
2. The General Aggregate Limit is the most we will pay for the sum of:
  - a. Medical expenses under Coverage **C**;
  - b. Damages under Coverage **A**, except damages because of "bodily injury" or "property damage" included in the "products-completed operations hazard"; and
  - c. Damages under Coverage **B**.
3. The Products-Completed Operations Aggregate Limit is the most we will pay under Coverage **A** for damages because of "bodily injury" and "property damage" included in the "products-completed operations hazard".
4. Subject to **2.** above, the Personal and Advertising Injury Limit is the most we will pay under Coverage **B** for the sum of all damages because of all "personal and advertising injury" sustained by any one person or organization.

5. Subject to **2.** or **3.** above, whichever applies, the Each Occurrence Limit is the most we will pay for the sum of:
  - a. Damages under Coverage **A**; and
  - b. Medical expenses under Coverage **C**
 because of all "bodily injury" and "property damage" arising out of any one "occurrence".
6. Subject to **5.** above, the Damage To Premises Rented To You Limit is the most we will pay under Coverage **A** for damages because of "property damage" to any one premises, while rented to you, or in the case of damage by fire, while rented to you or temporarily occupied by you with permission of the owner.
7. Subject to **5.** above, the Medical Expense Limit is the most we will pay under Coverage **C** for all medical expenses because of "bodily injury" sustained by any one person.

The Limits of Insurance of this Coverage Part apply separately to each consecutive annual period and to any remaining period of less than 12 months, starting with the beginning of the policy period shown in the Declarations, unless the policy period is extended after issuance for an additional period of less than 12 months. In that case, the additional period will be deemed part of the last preceding period for purposes of determining the Limits of Insurance.

### SECTION IV – COMMERCIAL GENERAL LIABILITY CONDITIONS

#### 1. Bankruptcy

Bankruptcy or insolvency of the insured or of the insured's estate will not relieve us of our obligations under this Coverage Part.

#### 2. Duties In The Event Of Occurrence, Offense, Claim Or Suit

- a. You must see to it that we are notified as soon as practicable of an "occurrence" or an offense which may result in a claim. To the extent possible, notice should include:
  - (1) How, when and where the "occurrence" or offense took place;
  - (2) The names and addresses of any injured persons and witnesses; and
  - (3) The nature and location of any injury or damage arising out of the "occurrence" or offense.

**b.** If a claim is made or "suit" is brought against any insured, you must:

- (1)** Immediately record the specifics of the claim or "suit" and the date received; and
- (2)** Notify us as soon as practicable.

You must see to it that we receive written notice of the claim or "suit" as soon as practicable.

**c.** You and any other involved insured must:

- (1)** Immediately send us copies of any demands, notices, summonses or legal papers received in connection with the claim or "suit";
- (2)** Authorize us to obtain records and other information;
- (3)** Cooperate with us in the investigation or settlement of the claim or defense against the "suit"; and
- (4)** Assist us, upon our request, in the enforcement of any right against any person or organization which may be liable to the insured because of injury or damage to which this insurance may also apply.

**d.** No insured will, except at that insured's own cost, voluntarily make a payment, assume any obligation, or incur any expense, other than for first aid, without our consent.

### **3. Legal Action Against Us**

No person or organization has a right under this Coverage Part:

- a.** To join us as a party or otherwise bring us into a "suit" asking for damages from an insured; or
- b.** To sue us on this Coverage Part unless all of its terms have been fully complied with.

A person or organization may sue us to recover on an agreed settlement or on a final judgment against an insured; but we will not be liable for damages that are not payable under the terms of this Coverage Part or that are in excess of the applicable limit of insurance. An agreed settlement means a settlement and release of liability signed by us, the insured and the claimant or the claimant's legal representative.

### **4. Other Insurance**

If other valid and collectible insurance is available to the insured for a loss we cover under Coverages **A** or **B** of this Coverage Part, our obligations are limited as follows:

#### **a. Primary Insurance**

This insurance is primary except when **b.** below applies. If this insurance is primary, our obligations are not affected unless any of the other insurance is also primary. Then, we will share with all that other insurance by the method described in **c.** below.

#### **b. Excess Insurance**

This insurance is excess over:

- (1)** Any of the other insurance, whether primary, excess, contingent or on any other basis:
  - (a)** That is Fire, Extended Coverage, Builder's Risk, Installation Risk or similar coverage for "your work";
  - (b)** That is Fire insurance for premises rented to you or temporarily occupied by you with permission of the owner;
  - (c)** That is insurance purchased by you to cover your liability as a tenant for "property damage" to premises rented to you or temporarily occupied by you with permission of the owner; or
  - (d)** If the loss arises out of the maintenance or use of aircraft, "autos" or watercraft to the extent not subject to Exclusion **g.** of Section **I** – Coverage **A** – Bodily Injury And Property Damage Liability.
- (2)** Any other primary insurance available to you covering liability for damages arising out of the premises or operations for which you have been added as an additional insured by attachment of an endorsement.

When this insurance is excess, we will have no duty under Coverages **A** or **B** to defend the insured against any "suit" if any other insurer has a duty to defend the insured against that "suit". If no other insurer defends, we will undertake to do so, but we will be entitled to the insured's rights against all those other insurers.

When this insurance is excess over other insurance, we will pay only our share of the amount of the loss, if any, that exceeds the sum of:

- (1) The total amount that all such other insurance would pay for the loss in the absence of this insurance; and
- (2) The total of all deductible and self-insured amounts under all that other insurance.

We will share the remaining loss, if any, with any other insurance that is not described in this Excess Insurance provision and was not bought specifically to apply in excess of the Limits of Insurance shown in the Declarations of this Coverage Part.

#### **c. Method Of Sharing**

If all of the other insurance permits contribution by equal shares, we will follow this method also. Under this approach each insurer contributes equal amounts until it has paid its applicable limit of insurance or none of the loss remains, whichever comes first.

If any of the other insurance does not permit contribution by equal shares, we will contribute by limits. Under this method, each insurer's share is based on the ratio of its applicable limit of insurance to the total applicable limits of insurance of all insurers.

#### **5. Premium Audit**

- a. We will compute all premiums for this Coverage Part in accordance with our rules and rates.
- b. Premium shown in this Coverage Part as advance premium is a deposit premium only. At the close of each audit period we will compute the earned premium for that period and send notice to the first Named Insured. The due date for audit and retrospective premiums is the date shown as the due date on the bill. If the sum of the advance and audit premiums paid for the policy period is greater than the earned premium, we will return the excess to the first Named Insured.
- c. The first Named Insured must keep records of the information we need for premium computation, and send us copies at such times as we may request.

#### **6. Representations**

By accepting this policy, you agree:

- a. The statements in the Declarations are accurate and complete;
- b. Those statements are based upon representations you made to us; and
- c. We have issued this policy in reliance upon your representations.

#### **7. Separation Of Insureds**

Except with respect to the Limits of Insurance, and any rights or duties specifically assigned in this Coverage Part to the first Named Insured, this insurance applies:

- a. As if each Named Insured were the only Named Insured; and
- b. Separately to each insured against whom claim is made or "suit" is brought.

#### **8. Transfer Of Rights Of Recovery Against Others To Us**

If the insured has rights to recover all or part of any payment we have made under this Coverage Part, those rights are transferred to us. The insured must do nothing after loss to impair them. At our request, the insured will bring "suit" or transfer those rights to us and help us enforce them.

#### **9. When We Do Not Renew**

If we decide not to renew this Coverage Part, we will mail or deliver to the first Named Insured shown in the Declarations written notice of the nonrenewal not less than 30 days before the expiration date.

If notice is mailed, proof of mailing will be sufficient proof of notice.

#### **SECTION V – DEFINITIONS**

1. "Advertisement" means a notice that is broadcast or published to the general public or specific market segments about your goods, products or services for the purpose of attracting customers or supporters. For the purposes of this definition:
  - a. Notices that are published include material placed on the Internet or on similar electronic means of communication; and
  - b. Regarding web-sites, only that part of a web-site that is about your goods, products or services for the purposes of attracting customers or supporters is considered an advertisement.
2. "Auto" means a land motor vehicle, trailer or semi-trailer designed for travel on public roads, including any attached machinery or equipment. But "auto" does not include "mobile equipment".

3. "Bodily injury" means bodily injury, sickness or disease sustained by a person, including death resulting from any of these at any time.
4. "Coverage territory" means:
  - a. The United States of America (including its territories and possessions), Puerto Rico and Canada;
  - b. International waters or airspace, but only if the injury or damage occurs in the course of travel or transportation between any places included in **a.** above; or
  - c. All other parts of the world if the injury or damage arises out of:
    - (1) Goods or products made or sold by you in the territory described in **a.** above;
    - (2) The activities of a person whose home is in the territory described in **a.** above, but is away for a short time on your business; or
    - (3) "Personal and advertising injury" offenses that take place through the Internet or similar electronic means of communication

provided the insured's responsibility to pay damages is determined in a "suit" on the merits, in the territory described in **a.** above or in a settlement we agree to.
5. "Employee" includes a "leased worker". "Employee" does not include a "temporary worker".
6. "Executive officer" means a person holding any of the officer positions created by your charter, constitution, by-laws or any other similar governing document.
7. "Hostile fire" means one which becomes uncontrollable or breaks out from where it was intended to be.
8. "Impaired property" means tangible property, other than "your product" or "your work", that cannot be used or is less useful because:
  - a. It incorporates "your product" or "your work" that is known or thought to be defective, deficient, inadequate or dangerous; or
  - b. You have failed to fulfill the terms of a contract or agreement;

if such property can be restored to use by:

  - a. The repair, replacement, adjustment or removal of "your product" or "your work"; or
  - b. Your fulfilling the terms of the contract or agreement.

9. "Insured contract" means:
  - a. A contract for a lease of premises. However, that portion of the contract for a lease of premises that indemnifies any person or organization for damage by fire to premises while rented to you or temporarily occupied by you with permission of the owner is not an "insured contract";
  - b. A sidetrack agreement;
  - c. Any easement or license agreement, except in connection with construction or demolition operations on or within 50 feet of a railroad;
  - d. An obligation, as required by ordinance, to indemnify a municipality, except in connection with work for a municipality;
  - e. An elevator maintenance agreement;
  - f. That part of any other contract or agreement pertaining to your business (including an indemnification of a municipality in connection with work performed for a municipality) under which you assume the tort liability of another party to pay for "bodily injury" or "property damage" to a third person or organization. Tort liability means a liability that would be imposed by law in the absence of any contract or agreement.
 

Paragraph **f.** does not include that part of any contract or agreement:

    - (1) That indemnifies a railroad for "bodily injury" or "property damage" arising out of construction or demolition operations, within 50 feet of any railroad property and affecting any railroad bridge or trestle, tracks, roadbeds, tunnel, underpass or crossing;
    - (2) That indemnifies an architect, engineer or surveyor for injury or damage arising out of:
      - (a) Preparing, approving, or failing to prepare or approve, maps, shop drawings, opinions, reports, surveys, field orders, change orders or drawings and specifications; or
      - (b) Giving directions or instructions, or failing to give them, if that is the primary cause of the injury or damage; or
    - (3) Under which the insured, if an architect, engineer or surveyor, assumes liability for an injury or damage arising out of the insured's rendering or failure to render professional services, including those listed in (2) above and supervisory, inspection, architectural or engineering activities.

- 10.** "Leased worker" means a person leased to you by a labor leasing firm under an agreement between you and the labor leasing firm, to perform duties related to the conduct of your business. "Leased worker" does not include a "temporary worker".
- 11.** "Loading or unloading" means the handling of property:
- a.** After it is moved from the place where it is accepted for movement into or onto an aircraft, watercraft or "auto";
  - b.** While it is in or on an aircraft, watercraft or "auto"; or
  - c.** While it is being moved from an aircraft, watercraft or "auto" to the place where it is finally delivered;
- but "loading or unloading" does not include the movement of property by means of a mechanical device, other than a hand truck, that is not attached to the aircraft, watercraft or "auto".
- 12.** "Mobile equipment" means any of the following types of land vehicles, including any attached machinery or equipment:
- a.** Bulldozers, farm machinery, forklifts and other vehicles designed for use principally off public roads;
  - b.** Vehicles maintained for use solely on or next to premises you own or rent;
  - c.** Vehicles that travel on crawler treads;
  - d.** Vehicles, whether self-propelled or not, maintained primarily to provide mobility to permanently mounted:
    - (1)** Power cranes, shovels, loaders, diggers or drills; or
    - (2)** Road construction or resurfacing equipment such as graders, scrapers or rollers;
  - e.** Vehicles not described in **a.**, **b.**, **c.** or **d.** above that are not self-propelled and are maintained primarily to provide mobility to permanently attached equipment of the following types:
    - (1)** Air compressors, pumps and generators, including spraying, welding, building cleaning, geophysical exploration, lighting and well servicing equipment; or
    - (2)** Cherry pickers and similar devices used to raise or lower workers;
- f.** Vehicles not described in **a.**, **b.**, **c.** or **d.** above maintained primarily for purposes other than the transportation of persons or cargo.
- However, self-propelled vehicles with the following types of permanently attached equipment are not "mobile equipment" but will be considered "autos":
- (1)** Equipment designed primarily for:
    - (a)** Snow removal;
    - (b)** Road maintenance, but not construction or resurfacing; or
    - (c)** Street cleaning;
  - (2)** Cherry pickers and similar devices mounted on automobile or truck chassis and used to raise or lower workers; and
  - (3)** Air compressors, pumps and generators, including spraying, welding, building cleaning, geophysical exploration, lighting and well servicing equipment.
- 13.** "Occurrence" means an accident, including continuous or repeated exposure to substantially the same general harmful conditions.
- 14.** "Personal and advertising injury" means injury, including consequential "bodily injury", arising out of one or more of the following offenses:
- a.** False arrest, detention or imprisonment;
  - b.** Malicious prosecution;
  - c.** The wrongful eviction from, wrongful entry into, or invasion of the right of private occupancy of a room, dwelling or premises that a person occupies, committed by or on behalf of its owner, landlord or lessor;
  - d.** Oral or written publication, in any manner, of material that slanders or libels a person or organization or disparages a person's or organization's goods, products or services;
  - e.** Oral or written publication, in any manner, of material that violates a person's right of privacy;
  - f.** The use of another's advertising idea in your "advertisement"; or
  - g.** Infringing upon another's copyright, trade dress or slogan in your "advertisement".

**15.** "Pollutants" mean any solid, liquid, gaseous or thermal irritant or contaminant, including smoke, vapor, soot, fumes, acids, alkalis, chemicals and waste. Waste includes materials to be recycled, reconditioned or reclaimed.

**16.** "Products-completed operations hazard":

**a.** Includes all "bodily injury" and "property damage" occurring away from premises you own or rent and arising out of "your product" or "your work" except:

- (1)** Products that are still in your physical possession; or
- (2)** Work that has not yet been completed or abandoned. However, "your work" will be deemed completed at the earliest of the following times:
  - (a)** When all of the work called for in your contract has been completed.
  - (b)** When all of the work to be done at the job site has been completed if your contract calls for work at more than one job site.
  - (c)** When that part of the work done at a job site has been put to its intended use by any person or organization other than another contractor or subcontractor working on the same project.

Work that may need service, maintenance, correction, repair or replacement, but which is otherwise complete, will be treated as completed.

**b.** Does not include "bodily injury" or "property damage" arising out of:

- (1)** The transportation of property, unless the injury or damage arises out of a condition in or on a vehicle not owned or operated by you, and that condition was created by the "loading or unloading" of that vehicle by any insured;
- (2)** The existence of tools, uninstalled equipment or abandoned or unused materials; or
- (3)** Products or operations for which the classification, listed in the Declarations or in a policy schedule, states that products-completed operations are subject to the General Aggregate Limit.

**17.** "Property damage" means:

**a.** Physical injury to tangible property, including all resulting loss of use of that property. All such loss of use shall be deemed to occur at the time of the physical injury that caused it; or

**b.** Loss of use of tangible property that is not physically injured. All such loss of use shall be deemed to occur at the time of the "occurrence" that caused it.

For the purposes of this insurance, electronic data is not tangible property.

As used in this definition, electronic data means information, facts or programs stored as or on, created or used on, or transmitted to or from computer software, including systems and applications software, hard or floppy disks, CD-ROMS, tapes, drives, cells, data processing devices or any other media which are used with electronically controlled equipment.

**18.** "Suit" means a civil proceeding in which damages because of "bodily injury", "property damage" or "personal and advertising injury" to which this insurance applies are alleged. "Suit" includes:

- a.** An arbitration proceeding in which such damages are claimed and to which the insured must submit or does submit with our consent; or
- b.** Any other alternative dispute resolution proceeding in which such damages are claimed and to which the insured submits with our consent.

**19.** "Temporary worker" means a person who is furnished to you to substitute for a permanent "employee" on leave or to meet seasonal or short-term workload conditions.

**20.** "Volunteer worker" means a person who is not your "employee", and who donates his or her work and acts at the direction of and within the scope of duties determined by you, and is not paid a fee, salary or other compensation by you or anyone else for their work performed for you.

**21.** "Your product":

**a.** Means:

- (1)** Any goods or products, other than real property, manufactured, sold, handled, distributed or disposed of by:
  - (a)** You;
  - (b)** Others trading under your name; or
  - (c)** A person or organization whose business or assets you have acquired; and
- (2)** Containers (other than vehicles), materials, parts or equipment furnished in connection with such goods or products.

- b. Includes**
  - (1)** Warranties or representations made at any time with respect to the fitness, quality, durability, performance or use of "your product"; and
  - (2)** The providing of or failure to provide warnings or instructions.
- c. Does not include vending machines or other property rented to or located for the use of others but not sold.**

**22. "Your work":**

- a. Means:**
  - (1)** Work or operations performed by you or on your behalf; and
  - (2)** Materials, parts or equipment furnished in connection with such work or operations.
- b. Includes**
  - (1)** Warranties or representations made at any time with respect to the fitness, quality, durability, performance or use of "your work", and
  - (2)** The providing of or failure to provide warnings or instructions.



**THIS ENDORSEMENT CHANGES THE POLICY. PLEASE READ IT CAREFULLY.**

## **ADDITIONAL INSURED – TOWNHOUSE ASSOCIATIONS**

This endorsement modifies insurance provided under the following:

COMMERCIAL GENERAL LIABILITY COVERAGE PART

WHO IS AN INSURED (Section II) is amended to include each individual townhouse owner, but only with respect to liability as a member of the townhouse association and not with respect to any liability arising out of the ownership, maintenance, use or repair of the real property to which the owner has title.

**THIS ENDORSEMENT CHANGES THE POLICY. PLEASE READ IT CAREFULLY.**

## **EMPLOYMENT-RELATED PRACTICES EXCLUSION**

This endorsement modifies insurance provided under the following:

### COMMERCIAL GENERAL LIABILITY COVERAGE PART

**A. The following exclusion is added to Paragraph 2., Exclusions of Section I – Coverage A – Bodily Injury And Property Damage Liability:**

This insurance does not apply to:

"Bodily injury" to:

- (1) A person arising out of any:
  - (a) Refusal to employ that person;
  - (b) Termination of that person's employment; or
  - (c) Employment-related practices, policies, acts or omissions, such as coercion, demotion, evaluation, reassignment, discipline, defamation, harassment, humiliation, discrimination or malicious prosecution directed at that person; or
- (2) The spouse, child, parent, brother or sister of that person as a consequence of "bodily injury" to that person at whom any of the employment-related practices described in Paragraphs (a), (b), or (c) above is directed.

This exclusion applies:

- (1) Whether the injury-causing event described in Paragraphs (a), (b) or (c) above occurs before employment, during employment or after employment of that person;
- (2) Whether the insured may be liable as an employer or in any other capacity; and
- (3) To any obligation to share damages with or repay someone else who must pay damages because of the injury.

**B. The following exclusion is added to Paragraph 2., Exclusions of Section I – Coverage B – Personal And Advertising Injury Liability:**

This insurance does not apply to:

"Personal and advertising injury" to:

- (1) A person arising out of any:
  - (a) Refusal to employ that person;
  - (b) Termination of that person's employment; or
  - (c) Employment-related practices, policies, acts or omissions, such as coercion, demotion, evaluation, reassignment, discipline, defamation, harassment, humiliation, discrimination or malicious prosecution directed at that person; or
- (2) The spouse, child, parent, brother or sister of that person as a consequence of "personal and advertising injury" to that person at whom any of the employment-related practices described in Paragraphs (a), (b), or (c) above is directed.

This exclusion applies:

- (1) Whether the injury-causing event described in Paragraphs (a), (b) or (c) above occurs before employment, during employment or after employment of that person;
- (2) Whether the insured may be liable as an employer or in any other capacity; and
- (3) To any obligation to share damages with or repay someone else who must pay damages because of the injury.

This endorsement modifies insurance provided under the following:

**COMMERCIAL GENERAL LIABILITY COVERAGE FORM**

**INDEPENDENT CONTRACTORS/SUBCONTRACTORS EXCLUSION**

It is agreed that this policy shall not apply to “bodily injury”, “property damage”, or “personal and advertising injury” arising out of the operations performed for any insured by any independent contractor(s) and/or subcontractor(s) or acts or omissions of any insured in the selection, retention or supervision of any independent contractor(s) and/or subcontractor(s).

All other terms and conditions of this policy remain unchanged. This endorsement is a part of your policy and takes effect on the effective date of your policy unless another effective date is shown.

**UNITED STATES LIABILITY INSURANCE GROUP  
WAYNE, PENNSYLVANIA**

This endorsement modifies insurance provided under the following:

**COMMERCIAL GENERAL LIABILITY COVERAGE FORM**

**BODILY INJURY EXCLUSION - ALL EMPLOYEES, VOLUNTEER  
WORKERS, TEMPORARY WORKERS, CASUAL LABORERS,  
CONTRACTORS, AND SUBCONTRACTORS**

**Section I – Coverages, Coverage A Bodily Injury and Property Damage Liability, 2. Exclusions, e. Employer’s Liability** is deleted in its entirety and replaced with the following:

**e. Employer’s Liability**

- (1) “Bodily injury” to any “employee”, “volunteer worker”, “temporary worker” or “casual laborer” arising out of or in the course of:
  - (a) Employment by any insured; or
  - (b) Performing duties related to the conduct of any insured’s business;
- (2) “Bodily injury” to any contractor, subcontractor or any “employee”, “volunteer worker”, “temporary worker” or “casual laborer” of any contractor or subcontractor arising out of or in the course of the rendering or performing services of any kind or nature whatsoever by such contractor, subcontractor or “employee”, “volunteer worker”, “temporary worker” or “casual laborer” of such contractor or subcontractor for which any insured may become liable in any capacity; or
- (3) Any obligation of any insured to indemnify or contribute with another because of damages arising out of such “bodily injury”; or
- (4) “Bodily injury” sustained by the spouse, child, parent, brother or sister of any “employee”, “volunteer worker”, “temporary worker” or “casual laborer” of any insured, or of a contractor, subcontractor, or of any “employee”, “volunteer worker”, “temporary worker” or “casual laborer” of any contractor or subcontractor as a consequence of any injury to any person as set forth in (1) and (2) above.

This exclusion applies to all claims and “suits” by any person or organization for damages because of such “bodily injury”, including damages for care and loss of services and any claim under which any insured may be held liable under any Workers’ Compensation law.

“Casual laborer” means any person providing work or materials to any insured for compensation of any type.

All other terms and conditions of this policy remain unchanged. This endorsement is a part of your policy and takes effect on the effective date of your policy unless another effective date is shown.

**UNITED STATES LIABILITY INSURANCE GROUP  
WAYNE, PENNSYLVANIA**

This endorsement modifies insurance provided under the following:

**COMMERCIAL GENERAL LIABILITY COVERAGE FORM  
COMPREHENSIVE PERSONAL LIABILITY INSURANCE  
PERSONAL - EXCESS LIABILITY POLICY  
COMMERCIAL UMBRELLA POLICY  
COMMERCIAL EXCESS LIABILITY POLICY**

**ABSOLUTE WAR OR TERRORISM EXCLUSION**

The following supersedes the terms and conditions of this policy.

If the Policy to which this endorsement is attached contains an exclusion for War, that exclusion is deleted in its entirety and replaced with the following. If the Policy to which this endorsement is attached does not contain an exclusion for War, the exclusion below applies.

This insurance does not apply to, and the Company will not defend or pay Loss for, any Claim arising out of, directly or indirectly resulting from, based upon or in any way involving any actual or alleged:

- (1) War, including undeclared or civil war;
- (2) Warlike action by a military force, including action in hindering or defending against an actual or expected attack, by any government, sovereign or other authority using military personnel or other agents;
- (3) Insurrection, rebellion, revolution, usurped power, or action taken by governmental authority in hindering or defending against any of these; or
- (4) "Terrorism", including any action taken in hindering or defending against an actual or expected incident of "terrorism"

regardless of any other cause or event that contributes concurrently or in any sequence to the injury or damage

The following definition is added to the Definitions Section:

"Terrorism" means activities against persons, organizations or property of any nature:

1. That involve the following or preparation for the following:
  - a. Use or threat of force or violence;
  - b. Commission or threat of a dangerous act; or
  - c. Commission or threat of an act that interferes with or disrupts an electronic, communication, information, or mechanical system; and
2. When one or both of the following applies:
  - a. The effect is to intimidate or coerce a government, or to cause chaos among the civilian population or any segment thereof, or to disrupt any segment of the economy; or
  - b. It is reasonable to believe the intent is to intimidate or coerce a government, or to seek revenge or retaliate, or to further political, ideological, religious, social or economic objectives or to express (or express opposition to) a philosophy or ideology.

All other terms and conditions of this policy remain unchanged. This endorsement is a part of your policy and takes effect on the effective date of your policy unless another effective date is shown.

**UNITED STATES LIABILITY INSURANCE GROUP  
WAYNE, PENNSYLVANIA**

This Endorsement modifies insurance provided under the following:

**COMMERCIAL GENERAL LIABILITY COVERAGE FORM  
COMMERCIAL UMBRELLA POLICY  
EXCESS LIABILITY POLICY**

**EXCLUSION – CONSTRUCTION OPERATIONS**

This insurance does not apply to “bodily injury”, “property damage”, or “personal and advertising injury”, or medical expenses arising out of any construction, “construction services”, demolition, renovation or site preparations.

“Construction Services” includes, but is not limited to, surveying, drafting, test borings, or inspections.

All other terms and conditions of this policy remain unchanged. This endorsement is a part of your policy and takes effect on the effective date of your policy unless another effective date is shown.

**UNITED STATES LIABILITY INSURANCE GROUP  
WAYNE, PENNSYLVANIA**

This endorsement modifies insurance provided under the following:

**COMMERCIAL GENERAL LIABILITY COVERAGE FORM  
LIQUOR LIABILITY COVERAGE FORM  
BUSINESSOWNERS COVERAGE FORM  
COMMERCIAL UMBRELLA POLICY  
EXCESS LIABILITY POLICY**

**Absolute Professional Liability Exclusion**

This policy does not insure against loss or expense, including but not limited to the cost of defense, arising out of or resulting from, directly or indirectly, the rendering of or failure to render professional services of any kind, or any error or omission, malpractice or mistake in the rendering of professional services of any kind, committed or alleged to have been committed by or on behalf of any insured.

This exclusion applies to all loss sustained by any person, including emotional distress, whether alleged, threatened or actual including but not limited to negligence or other wrongdoing with respect to:

- a. Hiring, placement, employment, training, supervision or retention of a person for whom any Insured is or ever was legally responsible; or
- b. Investigation or reporting to the proper authorities, or failure to so report; or
- c. The failure to protect any person while that person was in the Insured's care, custody or control.

All other terms and conditions of this policy remain unchanged. This endorsement is a part of your policy and takes effect on the effective date of your policy unless another effective date is shown.

**UNITED STATES LIABILITY INSURANCE GROUP  
WAYNE, PENNSYLVANIA**

This endorsement modifies insurance provided under the following:

**COMMERCIAL GENERAL LIABILITY COVERAGE FORM**

**ABSOLUTE EXCLUSION FOR POLLUTION, ORGANIC PATHOGEN,  
SILICA, ASBESTOS AND LEAD WITH A HOSTILE FIRE EXCEPTION**

**SECTION I – COVERAGES, COVERAGE A. BODILY INJURY AND PROPERTY DAMAGE LIABILITY**, Paragraph 2. **Exclusions, f. Pollution** is deleted in its entirety and replaced with the following:

**f. Pollution, Organic Pathogen, Silica, Asbestos and Lead**

- (1) “Bodily injury” or “property damage”; or
- (2) Diminishing or lessening in value of property or for damages from the taking, use or acquisition or interference with the rights of others in property or air space; or
- (3) Loss, cost or expense, including but not limited to payment for investigation or defense, fines and penalties, arising out of any governmental or any private party action, that an insured or any other party test for, monitor, clean up, remove, contain, mitigate, treat, detoxify or neutralize or in any way respond to or assess the actual or alleged effects of “pollutants”, “organic pathogens”, “silica”, asbestos, or lead;

arising directly, indirectly, in concurrence with or in any sequence out of the actual, alleged or threatened presence of or exposure to, ingestion, inhalation, absorption, contact with discharge, dispersal, seepage, release or escape of “pollutants”, “organic pathogens”, “silica”, asbestos, or lead, whether or not any of the foregoing are (1) sudden, accidental or gradual in nature; (2) intentional; or (3) expected or intended from the standpoint of the insured.

This exclusion applies even if the “pollutant”, “organic pathogen”, “silica”, asbestos, or lead has a function in, or is used by you in your business, operations, premises, site or location.

This exclusion does not apply to "bodily injury" or "property damage" arising out of heat, smoke or fumes from a "hostile fire" unless that "hostile fire" occurred or originated:

- (1) At any premises, site or location which is or was at any time used by or for any insured or others for the handling, storage, disposal, processing or treatment of waste; or
- (2) At any premises, site or location on which any insured or any contractors or subcontractors working directly or indirectly on any insured's behalf are performing operations to test for, monitor, clean up, remove, contain, treat, detoxify, neutralize or in any way respond to, or assess the effects of, "pollutants".



This exclusion does not apply to “bodily injury” or “property damage” arising from the consumption of food products intended for human consumption.

“Pollutants” mean[s] any solid, liquid, gaseous, bacterial, fungal, electromagnetic, thermal or other substance that can be toxic or hazardous, cause irritation to animals or persons and/or cause contamination to property and the environment including smoke, vapor, soot, fumes, acids, alkalis, chemicals, toxic materials, “volatile organic compound” and gases therefrom, radon, combustion byproducts and waste. Specific examples identified as pollutants include, but are not limited to, diesel, kerosene, and other fuel oils . . . carbon monoxide, and other exhaust gases . . . mineral spirits, and other solvents . . . tetrachloroethylene, perchloroethylene (PERC), trichloroethylene (TCE), methylene chloroform, and other dry cleaning chemicals . . . chlorofluorocarbons, chlorinated hydrocarbons, adhesives, pesticides, insecticides . . . and all substances specifically listed, identified, or described by one or more of the following references: **Comprehensive Environmental Response, Compensation, and Liability Act (CERCLA) Priority List Hazardous Substances** (1997 and all subsequent editions), **Agency for Toxic Substances And Disease Registry ToxFAQs™**, and/or **U.S. Environmental Protection Agency EMCI Chemical References Complete Index**.

“Silica” means silica in any form and any of its derivatives, including but not limited to silica dust, silicon dioxide, crystalline silica, quartz, or non-crystalline (amorphous) silica.

“Volatile organic compound” means any compound which discharges organic gases as it decomposes or evaporates, examples of which include but are not limited to formaldehyde, pesticides, adhesives, construction materials made with organic chemicals, solvents, paint, varnish and cleaning products.

“Waste” means any property intended to be disposed, recycled, reused or reclaimed by the owner or user thereof.

“Organic pathogen” means any organic irritant or contaminant, including but not limited to mold, fungus, bacteria or virus, including but not limited to their byproduct such as mycotoxin, mildew, or biogenic aerosol.

All other terms and conditions of this policy remain unchanged. This endorsement is a part of your policy and takes effect on the effective date of your policy unless another effective date is shown.

**UNITED STATES LIABILITY INSURANCE GROUP  
WAYNE, PENNSYLVANIA**

This Endorsement modifies insurance provided under the following:

**COMMERCIAL GENERAL LIABILITY COVERAGE FORM**

**PRE-EXISTING OR PROGRESSIVE  
DAMAGE OR DEFECT EXCLUSION**

The following is added to **SECTION I – COVERAGES, COVERAGE A Bodily Injury and Property Damage Liability, Paragraph 2. Exclusions:**

**1. Pre-existing or Progressive Damage or Defect**

This insurance does not apply to “bodily injury” or “property damage”, or any damage(s) arising out of or related to “bodily injury” or “property damage”, whether known or unknown,

- a. Which first occurred, or is alleged to have first occurred, in whole or in part, prior to the inception date of this policy; or
- b. Which are, or alleged to be, in the process of occurring, in whole or in part, prior to the inception date of this policy, even if the “occurrence” continues, changes or resumes during the policy period; or
- c. Which is in the process of being reported, investigated, in litigation or settled as of the inception date of this policy.

This insurance does not apply to “property damage”, or any damage(s) arising out of or related to “property damage”, whether known or unknown, that arises out of the same or substantially the same condition or defect, or series of conditions or defects, which existed prior to the inception date of this policy, even if the condition or defect, or series of conditions or defects continues, changes or resumes during the policy period.

All other terms and conditions of this policy remain unchanged. This endorsement is a part of your policy and takes effect on the effective date of your policy unless another effective date is shown.

**UNITED STATES LIABILITY INSURANCE GROUP  
WAYNE, PENNSYLVANIA**

This endorsement modifies insurance provided under the following:

**COMMERCIAL GENERAL LIABILITY COVERAGE FORM**

**EXCLUSION – VIOLATION OF STATUTES THAT GOVERN E-MAILS,  
FAX, PHONE CALLS OR OTHER METHODS OF SENDING MATERIAL  
OR INFORMATION**

The following exclusion is added to **SECTION I – COVERAGE, COVERAGE A – BODILY INJURY AND PROPERTY DAMAGE LIABILITY**, Paragraph **2. Exclusions**:

**2. Exclusions**

This insurance does not apply to:

**ELECTRONIC DATA**

Damages arising out of the loss of, loss of use of, damage to, corruption of, inability to access, or inability to manipulate electronic data.

As used in this exclusion, electronic data means information, facts or programs stored as or on, created or used on, or transmitted to or from computer software, including systems and applications software, hard or floppy disks, CD-ROMS, tapes drives, cells, data processing devices or any other media which are used with electronically controlled equipment.

**DISTRIBUTION OF MATERIAL IN VIOLATION OF STATUTES**

"Bodily injury" or "property damage" arising directly or indirectly out of any action or omission that violates or is alleged to violate:

- a.** The Telephone Consumer Protection Act (TCPA), including any amendment of or addition to such law; or
- b.** The CAN-SPAM Act of 2003, including any amendment of or addition to such law;
- c.** The Fair Credit Reporting Act (FCRA), and any amendment of or addition to such law, including the Fair and Accurate Credit Transaction Act (FACTA); or
- d.** Any federal, state or local statute, ordinance or regulation, other than the TCPA, CAN-SPAM Act of 2003 or FCRA and their amendments and additions, that addresses, prohibits, or limits the printing, dissemination, disposal, collecting, recording, sending, transmitting, communicating or distribution of material or information.

The following exclusion is added to **SECTION I – COVERAGES, COVERAGE B – PERSONAL AND ADVERTISING INJURY LIABILITY**, Paragraph **2. Exclusions**:

**2. Exclusions**

This insurance does not apply to:

**DISTRIBUTION OF MATERIAL IN VIOLATION OF STATUTES**

"Personal and advertising injury" arising directly or indirectly out of any action or omission that violates or is alleged to violate:

- a.** The Telephone Consumer Protection Act (TCPA), including any amendment of or addition to such law; or
- b.** The CAN-SPAM Act of 2003, including any amendment of or addition to such law;
- c.** The Fair Credit Reporting Act (FCRA), and any amendment of or addition to such law, including the Fair and Accurate Credit Transaction Act (FACTA); or
- d.** Any federal, state or local statute, ordinance or regulation, other than the TCPA, CAN-SPAM Act of 2003 or FCRA and their amendments and additions, that addresses, prohibits, or limits the printing, dissemination, disposal, collecting, recording, sending, transmitting, communicating or distribution of material or information.

All other terms and conditions of this Policy remain unchanged. This endorsement is a part of your Policy and takes effect on the effective date of your Policy unless another effective date is shown.

This endorsement modifies insurance provided under the following:

**COMMERCIAL GENERAL LIABILITY COVERAGE FORM**

**Amendment Of Liquor Liability Exclusion**

It is agreed:

**SECTION I – COVERAGES; COVERAGE A BODILY INJURY AND PROPERTY DAMAGE LIABILITY; 2. Exclusions; c. Liquor Liability** is deleted in its entirety and replaced with the following:

"Bodily injury" or "property damage" for which any insured may be held liable by reason of:

- (1) Causing or contributing to the intoxication of any person;
- (2) The furnishing of alcoholic beverages to a person under the legal drinking age or under the influence of alcohol; or
- (3) Any statute, ordinance or regulation relating to the sale, gift, distribution or use of alcoholic beverages.

This exclusion applies even if the claims against any insured allege negligence or other wrongdoing in:

- (a) The supervision, hiring, employment, training or monitoring of others by that insured; or
- (b) Providing or failing to provide transportation with respect to any person that may be under the influence of alcohol;

if the "occurrence" which caused the "bodily injury" or "property damage", involved that which is described in Paragraph (1), (2) or (3) above.

However, this exclusion applies only if you are in the business of manufacturing, distributing, selling, serving or furnishing alcoholic beverages. For the purposes of this exclusion, permitting a person to bring alcoholic beverages on your premises, for consumption on your premises, whether or not a fee is charged or a license is required for such activity, is not by itself considered the business of selling, serving or furnishing alcoholic beverages.

All other terms and conditions of this policy remain unchanged. This endorsement is a part of your policy and takes effect on the effective date of your policy unless another effective date is shown.

# Community Association Professional Liability Coverage Form

**NOTICE:** This is a Claims-Made Coverage Form. This Coverage Form only covers those **Claims** first made against the **Insured** during the **Policy Period** or Extended Reporting Period, if purchased. **Defense Costs** shall be applied against the Retention.

In consideration of the payment of the premium and reliance upon all statements made and information furnished to the **Company**, including the statements made in the **Application** and all attachments and materials submitted therewith, and subject to all the provisions of this Policy, the **Company** agrees as follows:

## I. INSURING AGREEMENT

- A. The **Company** will pay on behalf of the **Insured**, **Loss** in excess of the Retention not exceeding the Limit of Liability shown in the Policy Declarations for which this coverage applies that the **Insured** shall become legally obligated to pay because of **Claims** first made against the **Insured** during the **Policy Period** or during the Extended Reporting Period, if applicable, for **Wrongful Acts** or **Wrongful Employment Acts** arising solely out of an **Insured's** duties on behalf of the **Organization**.
- B. The **Company** has the right and duty to defend any **Claim** to which this insurance applies, even if the allegations of the **Claim** are groundless, false or fraudulent.

## II. FULL PRIOR ACTS COVERAGE PROVISION

Coverage shall apply to any **Claim** made against the **Insured** for **Wrongful Acts** or **Wrongful Employment Acts** arising solely out of the **Insured's** duties on behalf of the **Organization** committed prior to the expiration date of this Policy, or the effective date of cancellation or non-renewal of this Policy provided that the **Claim** is first made during the **Policy Period**, or the Extended Reporting Period, if applicable.

However, coverage shall not apply to any **Claim** based upon or arising out of any **Wrongful Act**, **Wrongful Employment Act** or circumstance likely to give rise to a **Claim** of which the person or persons signing the **Application** had knowledge, or otherwise had a reasonable basis to anticipate might result in a **Claim**, prior to the earlier of:

- A. the inception date of this Policy; or
- B. the inception date of the first Policy of this type the **Company** has issued to the **Parent Organization**, provided that the **Company** has written continuous coverage for the **Parent Organization** from such date to the inception date of this Policy.

## III. DEFINITIONS

A. "**Application**" means:

- (1) An application and any material submitted for this Policy and
- (2) An application(s), and any material submitted for all previous Policies issued by the **Company** providing continuous coverage until the inception date of this Policy.

The content of (1) and (2) above is incorporated by reference in this Policy as if physically attached hereto.

B. "**Claim**" means:

- (1) any written notice received by any **Insured** that any person or entity intends to hold such **Insured** responsible for a **Wrongful Act** or **Wrongful Employment Act**; or
- (2) any written demand for monetary or non-monetary relief received by any **Insured** seeking to hold such **Insured** responsible for a **Wrongful Act** or **Wrongful Employment Act**; or
- (3) any judicial or administrative proceeding initiated against any **Insured** seeking to hold such **Insured** responsible for a **Wrongful Act** or **Wrongful Employment Act**, including any proceeding conducted by the Equal Employment Opportunity Commission or similar federal, state or local agency and any appeal therefrom.

A **Claim** shall be considered first made when an **Insured** or its legal representative or agent first receives notice of a **Claim**.

C. "**Company**" means the insurer identified in the Policy Declarations.

D. "**Construction Defect(s)**" means any actual or alleged defective, faulty, or delayed construction or any other matter constituting a construction defect under applicable law, regardless of whether it results from:

- (1) defective or incorrect architectural plans or other designs;

- (2) defective or improper soil testing;
- (3) defective, inadequate or insufficient protection from subsoil or earth movement or subsidence;
- (4) construction, manufacture or assembly of any tangible property;
- (5) the failure to provide or pay for any construction-related goods or services; or
- (6) the supervision or management of any construction-related activities.

E. “**Defense Costs**” means reasonable and necessary legal fees and expenses incurred by the **Company**, or by any attorney designated by the **Company** to defend any **Insured**, resulting from the investigation, adjustment, defense and appeal of a **Claim**. **Defense Costs** includes other fees, costs, costs of attachment or similar bonds (without any obligation on the part of the **Company** to apply for or furnish such bonds), but does not include salaries, wages, overhead or benefits expenses of any **Insured**.

F. “**Discrimination**” means:

- (1) the termination of an employment relationship; or
- (2) a demotion or failure to hire or promote any individual; or
- (3) any other limitation or classification of an **Employee** or applicant for employment which would deprive any individual of employment opportunities or adversely affect any individual’s status as an **Employee**;

because of race, color, religion, age, sex, disability, pregnancy, national origin, marital status, sexual orientation or other protected class or characteristic established under applicable federal, state or local statute ordinance, regulation or order.

G. “**Domestic Partner**” means any natural person qualifying as a domestic partner under the provisions of any applicable federal, state or local law.

H. “**Employee**” means any natural person whose labor or service is engaged by and directed by the **Organization** while performing duties related to the conduct of the **Organization’s** business and includes leased, part-time, seasonal and temporary workers, volunteers and interns. An **Employee’s** status as an **Insured** will be determined as of the date of the **Wrongful Act** or **Wrongful Employment Act** that results in the **Claim**.

I. “**Harassment**” means:

- (1) sexual harassment including unwelcome

sexual advances, requests for sexual favors or other verbal or physical conduct of a sexual nature that are made a condition of employment, are used as a basis for employment decisions, or create a work environment that is hostile, intimidating or offensive or that otherwise interferes with performance; or

- (2) other harassment which creates a work environment that is hostile, intimidating or offensive or that otherwise interferes with performance.

J. “**Individual Insureds**” means any persons who were, now are, or shall be directors, trustees, officers, **Employees**, volunteers or committee members of the **Organization**, including their estates, heirs, legal representatives or assigns in the event of their death, incapacity or bankruptcy.

K. “**Insured(s)**” means the **Organization** and the **Individual Insureds**.

L. “**Loss**” means damages and settlements which an **Insured** is legally obligated to pay as a result of a **Wrongful Act** or **Wrongful Employment Act**, front pay and back pay, pre-judgment and post judgment interest awarded by a court and punitive or exemplary damages to the extent such damages are insurable under applicable law but does not include fines, penalties, taxes, the multiplied portion of any multiple damage award or an express obligation to make payments in the event of the termination of employment.

For the purpose of determining the insurability of punitive damages and exemplary damages, the laws of the jurisdiction most favorable to the insurability of such damages shall control, provided that such jurisdiction has a substantial relationship to the relevant **Insured** or to the **Claim** giving rise to the damages.

M. “**Organic Pathogen**” means any organic irritant or contaminant, including but not limited to mold, fungus, bacteria or virus, including but not limited to their byproduct such as mycotoxin, mildew, or biogenic aerosol.

N. “**Organization**” means:

- (1) the **Parent Organization**; and
- (2) any **Subsidiary** of the **Parent Organization**; and
- (3) any entity in its capacity as a debtor in possession of (1) or (2) above under the United States bankruptcy law or equivalent status under the law of any other jurisdiction

O. “**Parent Organization**” means the entity named in Item I. of the Policy Declarations.

P. “**Policy Period**” means the period from the

effective date of this Policy set forth in the Policy Declarations to the expiration date or the effective date of cancellation or non-renewal date, if any.

**Q. “Retaliation”** means any actual or alleged retaliatory treatment against an **Employee** because of:

- (1) the exercise of or attempt to exercise an **Employee’s** rights under law; or
- (2) an **Employee’s** disclosure of or threat to disclose to a governmental agency or superior acts of actual or alleged wrongdoing by any **Insured**; or
- (3) the filing of any claim under any federal, state or local “whistle-blower” law including the Federal False Claims Act; or
- (4) **Employee** strikes or slowdowns.

**R. “Subsidiary”** means, for the purpose of this Policy, any entity which is more than 50% owned by the **Parent Organization** as of the effective date of this Policy and is disclosed as a subsidiary in an **Application** to the **Company**.

A non profit entity formed or acquired after the effective date of this Policy is, for the purpose of this Policy, a **Subsidiary** if:

- (1) its assets total less than 25% of the total consolidated assets of the **Parent Organization** at the time of formation or acquisition and
- (2) the formation or acquisition with full particulars about the new **Subsidiary** has been disclosed to the **Company** by the **Parent Organization** as soon as practicable but no later than the expiration date of this Policy, or effective date of cancellation or non-renewal, if any.

Any non profit entity formed or acquired after the effective date of this Policy whose assets total more than 25% of the total consolidated assets of the **Parent Organization** or any for profit entity formed or acquired after the effective date of this Policy is, for the purpose of this Policy, a **Subsidiary** only if:

- (1) the **Parent Organization** provides written notice to the **Company** of such **Subsidiary** as soon as practicable, but within sixty (60) days of the formation or acquisition of the **Subsidiary**; and
- (2) the **Parent Organization** provides the **Company** with such information as the **Company** may deem necessary to determine the insurability of the **Subsidiary**; and
- (3) the **Parent Organization** accepts any

special terms, conditions, exclusions, limitations or premium imposed by the **Company**; and

- (4) the **Company**, at its sole discretion, agrees to insure the **Subsidiary**.

A **Subsidiary** which is sold or dissolved:

- (1) after the effective date of this Policy and which was an **Insured** under this Policy; or
- (2) prior to the effective date of this Policy and which was an **Insured** under a prior Policy issued by the **Company**;

shall continue to be an **Insured**, but only with respect to **Claims** first made during this **Policy Period** or Extended Reporting Period, if applicable, arising out of **Wrongful Acts** or **Wrongful Employment Acts** committed or allegedly committed during the time that the entity was a **Subsidiary** of the **Parent Organization**.

- S. “Third Party”** means any person(s) with whom an **Insured** in their capacity as such interacts while the **Insured** is performing duties related to the conduct of the **Organization’s** business.
- T. “Third Party Discrimination”** means discrimination by an **Insured** in their capacity as such against a **Third Party** based upon such **Third Party’s** race, religion, age, sex, disability, national origin, sexual orientation or other protected class or characteristic established under applicable federal, state or local statute or ordinance while the **Insured** is performing duties related to the conduct of the **Organization’s** business.
- U. “Third Party Harassment”** means
- (1) sexual harassment including any unwelcome sexual advances, requests for sexual favors or other verbal or physical conduct of a sexual nature against a **Third Party**; or
  - (2) other harassment which creates an environment that is hostile, intimidating or offensive to a **Third Party**;
- committed or allegedly committed by an **Insured** in their capacity as such while the **Insured** is performing duties related to the conduct of the **Organization’s** business.
- V. “Wrongful Act”** means any actual or alleged act, error, omission, misstatement, misleading statement, neglect or breach of duties:
- (1) by the **Organization**; or
  - (2) by the **Individual Insureds** arising solely from duties conducted on behalf of the **Organization**; or
  - (3) asserted against any **Individual Insured**



because of an actual or alleged error, omission, misstatement, misleading statement, neglect or breach of duty by the **Organization**.

**Wrongful Act** shall also include any actual or alleged act of:

- (1) **Third Party Discrimination** or
- (2) **Third Party Harassment**.

It is further agreed that the same **Wrongful Act**, and interrelated series of **Wrongful Acts** or a series of similar or related **Wrongful Acts** by one or more **Insureds** shall be deemed to be one **Wrongful Act** and to have commenced at the time of the earliest **Wrongful Act**.

**W. "Workplace Tort"** means any actual or alleged employment related:

- (1) misrepresentation; or
- (2) negligent supervision, training or evaluation; or
- (3) wrongful discipline; or
- (4) wrongful deprivation of a career opportunity; or
- (5) failure to enforce written policies and procedures relating to a **Wrongful Employment Act**.

**X. "Wrongful Employment Act"** means any actual or alleged act of:

- (1) **Discrimination**; or
- (2) **Harassment**; or
- (3) **Retaliation**; or
- (4) **Wrongful Termination**; or
- (5) **Workplace Tort**; or
- (6) Negligent violation of the Uniformed Services Employment & Reemployment Rights Act; or
- (7) Negligent violation of the Family and Medical Leave Act of 1993; or
- (8) Negligent violation of state law having the same or substantially similar purpose as the acts in (6) or (7) above; or
- (9) acts described in clauses (1) through (8) above arising from the use of the **Organization's** Internet, e-mail, telecommunication or similar systems, including the failure to provide and enforce adequate policies and procedures relating to such use of the **Organization's** Internet, e-mail, telecommunication or similar systems;

committed or allegedly committed by the **Organization** or by an **Individual Insured** acting solely within his/her capacity as such involving

and brought by any **Employee**, former **Employee** or applicant for employment with the **Organization** or asserted by any **Employee**, former **Employee** or applicant for employment with the **Organization** against an **Individual Insured** because of his/her status as such.

It is further agreed that the same **Wrongful Employment Act**, and interrelated series of **Wrongful Employment Acts** or a series of similar or related **Wrongful Employment Acts** by one or more **Insureds** shall be deemed to be one **Wrongful Employment Act** and to have commenced at the time of the earliest **Wrongful Employment Act**.

**Y. "Wrongful Termination"** means the actual or constructive termination of an employment relationship or the demotion of or the failure to promote any **Employee** in a manner which is illegal and wrongful or in breach of an implied agreement to continue employment.

#### IV. EXCLUSIONS

The **Company** shall not be liable to make payment for **Loss** or **Defense Costs** (except where otherwise noted) in connection with any **Claim** made against the **Insured** arising out of, directly or indirectly resulting from or in consequence of, or in any way involving:

**A.** any actual or alleged bodily injury, sickness, humiliation, mental anguish, emotional distress, invasion of privacy, assault, battery, disease or death of any person, or theft, conversion, misappropriation, damage to or destruction of any property including any loss of use or slander of title; provided that this exclusion shall not apply to:

(1) **Claims** for defamation that result from a **Wrongful Act**. However, coverage afforded for defamation shall only be excess over the **Insured's** primary General Liability Policy. Excess coverage under this Policy shall follow the form of said General Liability Policy. Failure to maintain a General Liability Policy shall not create primary coverage under this Policy; or

(2) **Claims** for mental anguish, emotional distress, invasion of privacy, or humiliation, libel, slander or defamation that result from a **Wrongful Employment Act**; or

**B.** conduct of the **Insured** or at the **Insured's** direction that is fraudulent, dishonest, criminal or with the intent to cause damage provided that this exclusion will not apply to **Defense Costs** incurred until such conduct is established to be fraudulent, dishonest or criminal by final and non-appealable judgment or adjudication; or

**C.** any of the **Insureds** gaining any profit, remuneration or advantage to which the **Insured**

was not legally entitled provided however this exclusion shall not apply to **Defense Costs** incurred until a final and non-appealable judgment or adjudication is rendered against the Insured as to this conduct; or

- D. the actual, alleged or threatened discharge, dispersal, release or escape of smoke, vapors, soot, fumes, acids, alkalis, toxic chemicals, liquids or gases, noise, waste materials, or other irritants, contaminants or pollutants into or upon land, the atmosphere or any water course or body of water, whether or not such actual, alleged or threatened discharge, dispersal, release or escape is sudden, accidental or gradual in nature, or any cost or expense arising out of any request, demand, or order that the **Insured** or others test for, monitor, clean up, remove, contain, treat, detoxify or neutralize any pollutants; or
- E. any form of **Organic Pathogen** including the actual, alleged or threatened existence, discharge, dispersal, release or escape of **Organic Pathogens** including water damage that results or is alleged to result in the existence of **Organic Pathogens**, whether or not such actual, alleged or threatened existence, discharge, dispersal, release or escape is sudden, accidental, intentional or gradual in nature or whether or not any resulting injury, damage, devaluation of property, cost or expense is expected or intended from the standpoint of the **Insured**. There will be no coverage for the **Insured's** failure or alleged failure to discover or disclose the existence of **Organic Pathogens** from any source whatsoever or water damage that results or is alleged to result in the existence of **Organic Pathogens**. In addition, this insurance does not cover fines and penalties arising out of any governmental direction, or any request of any private party or citizen action that the **Insured** test for, monitor, clean up, remove, contain, treat, detoxify or neutralize **Organic Pathogens** or any **Claim** for the taking, use, acquisition or interference with rights of others in property or air space; or
- F. any radioactive, toxic or explosive properties of nuclear material which includes, but is not limited to, source material, "special nuclear material" and "by product material" as those terms are defined in the Atomic Energy Act of 1954 and any amendments thereto and any similar provisions by any federal, state or local statutory or common law; or
- G. any pension, profit sharing, welfare benefit or other employee benefit program established in whole or part for the benefit of any **Individual Insured**, or based upon, arising out of or in any way involving the Employee Retirement Income Security Act of 1974 (except Section 510 thereof) or any amendments thereof or regulations promulgated thereunder or similar provisions of any federal, state or local statutory law or common law provided that this exclusion will not apply to any **Claim** for actual or alleged **Retaliation** with regards to benefits paid or payable; or
- H. any **Claim** by, at the behest of, or on behalf of the **Organization** and/or any **Individual Insured**; provided that this Exclusion shall not apply to:
  - (1) any derivative action on behalf of, or in the name or right of the **Organization**, if such action is brought and maintained totally independent of, and without the solicitation, assistance, participation or intervention of any of the **Insureds**; or
  - (2) a **Claim** that is brought and maintained by or on behalf of any **Individual Insured** for contribution or indemnity which is part of or results directly from a **Claim** which is otherwise covered by the terms of this Policy; or
  - (3) a **Claim** brought by any **Individual Insured** for a **Wrongful Employment Act**; or
  - (4) a **Claim** that is brought and maintained by or on behalf of any former director, trustee, officer, volunteer or committee member, but only if such **Claim** does not arise out of, directly or indirectly result from, is in consequence of, or in any way involves any **Wrongful Act, Wrongful Employment Act**, responsibilities, actions, or failure to act by the **Insured** during such former director, trustee, officer, volunteer or committee member's tenure of service to the **Insured**.
- I. any **Claim** made by or against any builder, developer, or sponsor in their capacity as such; or
- J. any actual or alleged liability of any **Insured**, in whole or in part, including but not limited to actions for contribution or indemnity, related to or for any **Construction Defect(s)**; or
- K. any pending or prior litigation, administrative or regulatory proceeding, **Claim**, demand, arbitration, decree, or judgment of which an **Insured** had written notice before the effective date of this Policy; or any fact, circumstance, event, situation, **Wrongful Act** or **Wrongful Employment Act** which before the effective date of this Policy was the subject of any notice under any other similar Policy of insurance to the **Insured**; or any future **Claims** or litigation based upon the pending or prior litigation or derived from the same or essentially the same facts, actual or alleged;

provided that, if this Policy is a renewal of a Policy or Policies previously issued by the **Company** and if the coverage provided by the **Company** was continuous from the effective date of the first such other policy to the effective date of this Policy, the reference in this exclusion to "effective date" will mean the effective date of the first Policy under which the **Company** first provided continuous coverage to an **Insured**; or

- L. any **Claim** against any **Subsidiary** or its **Individual Insureds** for any **Wrongful Act** or **Wrongful Employment Act** occurring prior to the date that such entity became a **Subsidiary**, or any **Wrongful Act** or **Wrongful Employment Act** occurring at any time that such entity is not a **Subsidiary**; or
- M. any obligation under a worker's compensation, disability benefits, insurance benefits or unemployment compensation law, or any similar law or regulation; provided this exclusion will not apply to any **Claim** for actual or alleged **Retaliation** with regards to benefits paid or payable; or
- N. any lockout, strike, picket line, replacement of worker(s) or other similar actions resulting from labor disputes or labor negotiations; provided that this exclusion will not apply to a **Claim** for actual or alleged **Retaliation** from the foregoing; or
- O. the National Labor Relations Act, Labor Management Relations Act and amendments thereto, or any similar state, federal, or local law or regulation provided that this exclusion will not apply to a **Claim** for actual or alleged **Retaliation** arising from an **Insured's** alleged violation of such law; or
- P. actual or alleged violations of the Fair Labor Standards Act, any amendments thereto, or any similar provisions of any federal, state or local law (except the Equal Pay Act); or
  - (1) improper wages or wage disputes due to misclassification of **Employees** as exempt or non-exempt; or
  - (2) misrepresentation involving any **Employee's** status as exempt or non-exempt; provided that this exclusion shall not apply to any **Claim** for actual or alleged **Retaliation** arising from the foregoing; or
- Q. any **Insured's** actual or alleged liability for damages under any express contract or agreement, however this exclusion shall not apply to **Defense Costs** associated with such **Claim**; or
- R. any costs or actual or alleged liability resulting from the modification of any real or personal property in order to make said real or personal property more accessible or accommodating to

any disabled person. This exclusion shall not apply to **Defense Costs** associated with such **Claim** however **Defense Costs** shall be a part of and not in addition to the Limit of Liability stated in Item III. of the Policy Declarations.

No **Wrongful Act** or **Wrongful Employment Act** of any **Individual Insured** or any fact pertaining to any **Insured** shall be imputed to any other **Individual Insured** for purposes of determining the applicability of Exclusions **B.** and **C.**

## V. LIMITS OF LIABILITY AND RETENTION

Regardless of the number of **Insureds** under this Policy, **Claim(s)** made or brought on account of **Wrongful Act(s)**, **Wrongful Employment Act(s)** or otherwise, the **Company's** liability is limited as follows:

- A. The Limit of Liability specified in the Policy Declarations as "in the aggregate" shall be the maximum liability for **Loss** from all **Claims**;
- B. The Limit of Liability specified in the Policy Declarations as the Limit for each **Claim** shall be the maximum liability for **Loss** for each **Claim** ;
- C. Defense Costs shall be in addition to the Limit of Liability as shown in the Policy Declarations;
- D. Subject to the Limits of Liability provisions stated in **A.**, **B.**, and **C.** above, the **Company** shall be liable to pay only **Defense Costs** and **Loss** in excess of the Retention specified in the Policy Declarations hereof as respects each and every **Claim**;
- E. The **Company** shall have no obligation to pay any part or all of the Retention specified in the Policy Declarations for any **Claim** on behalf of an **Insured**. If the **Company**, at its sole discretion, elects to pay any part or all of the Retention, the **Insureds** agree to repay such amounts to the **Company** upon demand;
- F. The Retention shall not apply to **Loss** or **Defense Costs** paid on behalf of an **Individual Insured** for a **Wrongful Act** when the **Organization** has not indemnified an **Individual Insured** for such **Loss** or **Defense Costs** subject to the terms and conditions of Section VIII. INDEMNIFICATION/ WAIVER OF RETENTION;
- G. The Limit of Liability for the Extended Reporting Period, if applicable, shall be a part of and not in addition to the limit specified in the Policy Declarations;
- H. **Claims** based upon or arising out of the same **Wrongful Act(s)** or **Wrongful Employment Act(s)**, interrelated **Wrongful Act(s)** or **Wrongful Employment Act(s)**, or a series of similar or related **Wrongful Act(s)** or **Wrongful Employment Act(s)** shall be considered a single **Claim** and shall be considered first made during

the Policy Period or Extended Reporting Period, if applicable, in which the earliest **Claim** arising out of such **Wrongful Act(s)** or **Wrongful Employment Act(s)** was first made and all **Loss** for such **Claims** shall be subject to the one Limit of Liability that applies to such earliest **Claim**;

- I. The Limit of Liability for this Policy shall apply separately to each consecutive annual period starting with the beginning of the **Policy Period** shown in the Policy Declarations. If this Policy is issued for a period of more than twelve (12) months but less than twenty-four (24) months or if the **Policy Period** is extended after issuance, the Extended Reporting Period will be deemed part of the last Policy Period for the purposes of determining the Limit of Liability.

## VI. LIFETIME OCCURRENCE REPORTING PROVISION

If the **Parent Organization** shall cancel or non-renew this Policy for a reason other than being sold, acquired or bankrupt, each **Individual Insured** who was not actively serving on behalf of the **Organization** at the time of the cancellation or non-renewal shall be provided an unlimited extension of time to report any **Claim(s)** for a **Wrongful Act** first made against the **Individual Insured** after the date of such cancellation or non-renewal. If the **Claim** is for a **Wrongful Employment Act**, the unlimited extension of time to report a **Claim** applies to the former Directors and Officers only and not to any other former **Individual Insureds**.

This extension of time to report **Claim(s)** shall only be afforded in the event that the **Wrongful Act** or **Wrongful Employment Act** was committed before the date of cancellation or non-renewal, and no Directors and Officers Liability policy, or policy providing essentially the same type of coverage, or extended Reporting period, is in effect at the time the **Claim** is made.

## VII. EXTENDED REPORTING PERIOD

- A. If the Policy expires, is cancelled or non-renewed for any reason other than non payment of premium, the **Parent Organization** shall have the right to purchase an Extended Reporting Period to report any **Claim(s)** or circumstance(s) which could be expected to give rise to a **Claim** being first made against the **Insured** during the twelve (12) months, or twenty-four (24) months or thirty-six (36) months after the effective date of such expiration, cancellation or non-renewal (depending upon the Extended Reporting Period purchased). An Extended Reporting Period shall only apply to a **Wrongful Act** or **Wrongful Employment Act** committed before the date of the Policy expiration, cancellation or non-renewal. For the purpose of this clause, any change in premium terms or terms on renewal shall not constitute a refusal to renew.

- B. The additional premium for the Extended Reporting Period shall be thirty percent (30%) of the annual premium set forth in the Policy Declarations for the twelve (12) month period, seventy-five percent (75%) of the annual premium set forth in the Policy Declarations for the twenty-four (24) month period, and one hundred twenty percent (120%) of the annual premium set forth in the Policy Declarations for the thirty-six (36) month period. The Extended Reporting Period begins on the expiration date or the effective date of cancellation or non-renewal of the Policy. The **Parent Organization** must notify the **Company** in writing and must pay the additional premium due no later than thirty (30) days after the effective date of such expiration, cancellation or non-renewal.
- C. All premium paid with respect to an Extended Reporting Period shall be deemed fully earned as of the first day of the Extended Reporting Period.
- D. The Limits of Liability available during the Extended Reporting Period shall not exceed the balance of the Limits of Liability available on the expiration date or effective date of the cancellation or non-renewal of the Policy.
- E. Coverage for **Claim(s)** or circumstances which ultimately lead to **Claim(s)** first received and reported during the Extended Reporting Period shall be in excess over any other valid and collectible insurance providing coverage for such **Claim(s)**.

## VIII. INDEMNIFICATION / WAIVER OF RETENTION

Regardless of whether **Loss** and **Defense Costs** resulting from any **Claim** against an **Individual Insured** is actually indemnified by the **Organization**, the Retention set forth in the Policy Declarations shall apply to any **Loss** and **Defense Costs** if indemnification of the **Individual Insured** by the **Organization** is legally permissible. The certificate of incorporation, charter, articles of association or other organizational documents of the **Organization**, including bylaws and resolutions, will be deemed to have been adopted or amended to provide indemnification to the **Individual Insured** to the fullest extent permitted by law.

However, if an **Individual Insured** is not indemnified for **Loss** and **Defense Costs** solely by reason of the **Organization's** financial insolvency or because indemnification is not legally permissible, the **Individual Insured's** Retention as stated on the Policy Declarations shall be amended to \$0. This change in Retention shall not affect any other terms or conditions of this Policy.

## IX. PROPERTY MANAGEMENT EXTENSION

The property manager/management company is included as an additional insured, but only with respect to **Claims** arising out of **Wrongful Act(s)** or **Wrongful Employment Act(s)** while acting within the scope of his or her duties on behalf of the **Insured**. However, there shall be no coverage afforded for a **Claim** brought by or on behalf of (1) the property manager/management company; (2) any current or former **Employee** thereof, or (3) any applicant for employment with the property manager/management company.

## X. SPOUSAL AND DOMESTIC PARTNER EXTENSION

If a **Claim** against an **Individual Insured** includes a **Claim** against the lawful spouse or **Domestic Partner** of such **Individual Insured** solely by reason of (1) such spousal or **Domestic Partner** status, or (2) such spouse's or **Domestic Partner's** ownership interest in property or assets that are sought as recovery for **Wrongful Act(s)** or **Wrongful Employment Act(s)**, any **Loss** which such spouse or **Domestic Partner** becomes legally obligated to pay on account of such **Claim** shall be deemed **Loss** which the **Individual Insured** becomes legally obligated to pay as a result of the **Claim**.

All definitions, exclusions, terms and conditions of this Policy, including the Retention, applicable to any **Claim** against or **Loss** or **Defense Costs** sustained by such **Individual Insured** shall also apply to this coverage extension.

The extension of coverage afforded by this Section X shall not apply to the extent the **Claim** alleges any wrongful act, error, omission, misstatement, misleading statement or neglect or breach of duties committed by such spouse or **Domestic Partner** as long as they are not also an **Individual Insured**.

## XI. DEFENSE AND SETTLEMENT

The **Insured** shall not demand or agree to arbitration of any **Claim** without the written consent of the **Company**. The **Insured** shall not, except at personal cost, make any offer or payment, admit any liability, settle any **Claim**, assume any obligation or incur any expense without the **Company's** written consent.

If a **Claim** is made against the **Insured** for **Loss** that is both covered and uncovered by this Policy, the **Company** will pay one hundred percent (100%) of **Defense Costs** for the **Claim** until such time that the Limits of Liability of this Policy are exhausted by payment of a covered **Loss** or the **Claim** for the covered **Loss** is resolved by settlement, verdict or summary judgment. The **Company**, as it deems expedient, has the right to investigate, adjust, defend, appeal and, with the consent of the **Insured**, negotiate the settlement of any **Claim** whether within

or above the Retention. If the **Insured** refuses to consent to a settlement recommended by the **Company**, the **Company's** obligation to the **Insured** for Defense Costs and Loss attributable to such **Claim(s)** shall be limited to:

- (1) the amount of the covered **Loss** in excess of the Retention which the **Company** would have paid in settlement at the time the **Insured** first refused to settle;
- (2) plus covered **Defense Costs** incurred up to the date the **Insured** first refused to settle;
- (3) plus seventy-five percent (75%) of covered **Loss** and **Defense Costs** in excess of the first settlement amount recommended by the **Company** to which the **Insured** did not consent.

It is understood that payment of (1), (2) and (3) above is the limit of the **Company's** liability under this Policy on any **Claim** in which the **Insured** fails or refuses to consent to the **Company's** settlement recommendation, subject at all times to the Limits of Liability and Retention provisions of the applicable coverage section. The remaining twenty-five percent (25%) of **Loss** and **Defense Costs** in excess of the amount referenced in (1) and (2) above shall be the obligation of the **Insured**.

The **Insured** agrees to cooperate with the **Company** on all **Claims**, and provide such assistance and information as the **Company** may reasonably request. Upon the **Company's** request, the **Insured** shall submit to examination and interrogation by a representative of the **Company**, under oath if required, and shall attend hearings, depositions, and trials, and shall assist in the conduct of suits, including but not limited to effecting settlement, securing and giving evidence, obtaining the attendance of witnesses, giving written statements to the **Company's** representatives and meeting with such representatives for the purpose of investigation and/or defense, all of the above without charge to the **Company**. The **Insured** further agrees not to take any action which may increase the **Insured's** or the **Company's** exposure for **Loss** or **Defense Costs**.

The **Insured** shall execute all papers required and shall do everything that may be necessary to secure and preserve any rights of indemnity, contribution or apportionment which the **Insured** or the **Company** may have, including the execution of such documents as are necessary to enable the **Company** to bring suit in the **Insured's** name, and shall provide all other assistance and cooperation which the **Company** may reasonably require.

## XII. ORDER OF PAYMENTS

In the event payment of **Loss** is due under this Policy but the amount of such **Loss** exceeds the remaining available Limit of Liability specified in the Policy

Declarations, the **Company** will to the extent of any remaining amount of the Limit of Liability available:

- A. first pay such **Loss** on behalf of the **Individual Insured(s)** for which coverage is provided under Section I. Insuring Agreement; then
- B. pay such **Loss** on behalf of the **Organization** for which coverage is provided under Section I. Insuring Agreement.

### XIII. NOTICE/ CLAIM AND CIRCUMSTANCE REPORTING PROVISIONS

Notice hereunder shall be given in writing to the **Company**. If mailed, the date of mailing of such notice shall constitute the date that such notice was given and proof of mailing shall be sufficient proof of notice.

- A. As a condition precedent to exercising any right to coverage under this Policy, the **Insured** shall give to the **Company** written notice of a **Claim** or circumstance which could be expected to give rise to a **Claim** being made against an **Insured** as soon as practicable, but:
  - (1) if the Policy expires, is cancelled or is non-renewed and if no Extended Reporting Period is purchased, no later than sixty (60) days after the expiration date or the effective date of such cancellation or non-renewal; or
  - (2) if an Extended Reporting Period is purchased, no later than the last day of the Extended Reporting Period.
- B. If written notice of a **Claim** or circumstance which could be expected to give rise to a **Claim** being made against an **Insured** has been given to the **Company** pursuant to Clause XIII.A. above, then any **Claim** which is subsequently made against the **Insured** and reported to the **Company** alleging, arising out of, based upon or attributable to the facts alleged in the **Claim** or circumstance which could be expected to give rise to a **Claim** being made against an **Insured** for which notice was given, or alleging any **Wrongful Act** or **Wrongful Employment Act** which is the same as or related to any **Wrongful Act** or **Wrongful Employment Act** alleged in the **Claim** or circumstance which could be expected to give rise to a **Claim** being made against an **Insured** for which notice was given, shall be considered made at the time such notice was given to the **Company**.

### XIV. CANCELLATION OR NON-RENEWAL

- A. This Policy may be cancelled by the **Parent Organization** by either surrender of the Policy thereof to the **Company** at its address stated in the Policy Declarations or by mailing to the **Company** written notice requesting cancellation and in either case stating when thereafter such

cancellation shall be effective. If cancelled by the **Parent Organization**, the **Company** shall retain the customary short rate proportion of the premium.

- B. The **Company** may cancel this Policy only in the event of the failure of the **Insured** to pay the premium when due by mailing to the **Parent Organization** written notice when, not less than ten (10) days thereafter, such cancellation shall be effective.
- C. In the event the **Company** refuses to renew this Policy, the **Company** shall mail to the **Parent Organization**, not less than sixty (60) days prior to the end of the **Policy Period**, written notice of non-renewal. Such notice shall be binding on all **Insureds**.
- D. The **Company** shall mail notice of cancellation or non-renewal by certificate of mailing stating the effective date of cancellation or non-renewal and the specific reason(s) for cancellation or non-renewal, which shall become the end of the **Policy Period**. Mailing of such notice shall be sufficient notice of cancellation or non-renewal
- E. If the Policy is canceled by the **Company**, earned premium shall be computed pro rata. Premium adjustment may be made at the time cancellation is effected, or as soon as practicable thereafter.

### XV. REPRESENTATIONS AND SEVERABILITY

- A. The **Insureds** represent that the particulars and statements contained in the **Application** are true and agree that (1) those particulars and statements are the basis of this Policy and are to be considered as incorporated into and constituting a part of the Policy; (2) those particulars and statements are material to the acceptance of the risk assumed by the **Company**; and (3) the Policy is issued in reliance upon the truth of such representations.
- B. An **Application** for coverage shall be construed as a separate **Application** for coverage by each **Individual Insured**. With respect to the particulars and statements contained in the **Application**, no fact pertaining to or knowledge possessed by any **Individual Insured** shall be imputed to any other **Individual Insured** for the purpose of determining if coverage is available. However, facts pertaining to and knowledge possessed by the individual(s) signing the **Application(s)** and the President, Chairperson, and Officers shall be imputed to the **Organization** for the purpose of determining if coverage is available.

### XVI. SUBROGATION

In the event of any payment under this Policy, the

**Company** shall be subrogated to the **Insured's** right of recovery therefore against any person or entity and the **Insured** shall execute and deliver such instruments and papers and do whatever else is necessary to secure such rights. The **Insured** shall not do anything to prejudice such rights.

## XVII. CHANGES

Notice to any agent or knowledge by any agent shall not effect a waiver or change in any part of this Policy or stop the **Company** from asserting any right under the terms of this Policy, nor shall the terms of this Policy be waived or changed except by an endorsement, issued by the **Company** to form a part of this Policy.

## XVIII. AUTHORIZATION CLAUSE AND NOTICES

By acceptance of this Policy, the **Insured** agrees that the **Parent Organization** shall act on behalf of all **Insureds** with respect to the giving and receiving of any return premiums that may become due under the Policy. Notice to the **Parent Organization** shall be directed to the individual named in the **Application**, or such other person as shall be designated by the **Parent Organization** in writing, at the address of the **Parent Organization**. Such notice shall be deemed to be notice to all **Insureds**. The **Parent Organization** shall be the agent of all **Insureds** to effect changes in the Policy or purchase an Extended Reporting Period.

## XIX. ASSIGNMENT

Assignment of interest under this Policy shall not bind the **Company** unless its consent is endorsed hereon.

## XX. OTHER INSURANCE

This Policy shall be excess of other existing insurance, including but not limited to any insurance under which there is a duty to defend, unless such other insurance is specifically written to be in excess of this Policy.

## XXI. TERMS OF POLICY CONFORMED TO STATUTE

Terms of this Policy which are in conflict with the statutes of the state wherein this Policy is issued are hereby amended to conform to such statutes.

## XXII. CHANGES IN EXPOSURE

- A. If after the Inception Date of this Policy:
- (1) the **Parent Organization** merges into or consolidates with another entity such that the **Parent Organization** is not the surviving entity; or
  - (2) another entity, person or group of entities and/or persons acting in concert acquires

more than fifty percent (50%) of the assets of the **Parent Organization**; or

- (3) another entity, person or group of entities and/or persons acting in concert acquires the right to elect or select a majority of the directors of the **Parent Organization**; or
- (4) the **Parent Organization** sells all or substantially all of its assets,

the above events referred to as a "Transaction,"

this Policy shall continue in full force and effect until the expiration date of the Policy, or the effective date of non-renewal if applicable with respect to **Wrongful Acts** or **Wrongful Employment Acts** occurring before the Transaction, but there shall be no coverage under this Policy for actual or alleged **Wrongful Acts** or **Wrongful Employment Acts** occurring on and after the Transaction.

- B. The **Parent Organization** shall give the **Company** written notice of the Transaction as soon as practicable, but not later than thirty (30) days after the effective date of the Transaction.

The entire premium for this Policy shall be deemed fully earned on the transaction date. In the event of a Transaction, the **Parent Organization** shall have the right to an offer of coverage by the **Company** for an Extended Reporting Period to report **Wrongful Acts** or **Wrongful Employment Acts** occurring prior to the effective date of the transaction.

## XXIII. ACTION AGAINST THE COMPANY

- A. No action shall lie against the **Company** unless as a condition precedent thereto, there shall have been full compliance with all of the terms of this Policy, and until the amount of the **Insured's** obligation to pay shall have been finally determined either by judgment against the **Insured** after actual trial or by written agreement of the **Insured**, the claimant or the claimant's legal representative and the **Company**.
- B. Any person or the legal representative thereof who has secured such judgment or written agreement shall thereafter be entitled to recover under this Policy to the extent of the insurance afforded by this Policy. No person or entity shall have any right under this Policy to join the **Company** as a party to any action against the **Insured** to determine the **Insured's** liability, nor shall the **Company** be impeded by the **Insured** or their legal representatives. Bankruptcy or insolvency of the **Insured** or their successors in interest shall not relieve the **Company** of its obligations hereunder.

#### **XXIV. ACCEPTANCE**

This Policy embodies all agreements existing between the parties hereunder or any of their agents relating to this insurance.



**UNITED STATES LIABILITY INSURANCE GROUP  
WAYNE, PENNSYLVANIA**

This endorsement modifies insurance provided under the following:

**COMMUNITY ASSOCIATION PROFESSIONAL LIABILITY COVERAGE FORM**

**FAILURE TO MAINTAIN CATASTROPHIC INSURANCE EXCLUSION**

It is hereby agreed that Section IV. EXCLUSIONS is amended to add the following:

The failure to affect or maintain appropriate or adequate insurance covering losses arising from **Earthquake** or **Volcanic Action**;

For purposes of this endorsement, Section III. DEFINITIONS is amended to add the following:

**Earthquake** means earth movement, including but not limited to any earth sinking, rising, displacement, shaking or shifting related to such event whether naturally caused or man-made.

**Volcanic Action** means a volcanic eruption, blast, including airborne shock waves, ash, dust or particulate matter or lava flow related to such event.

All other terms and conditions of this Policy remain unchanged. This endorsement is a part of your Policy and takes effect on the effective date of your Policy unless another effective date is shown.

**NON PROFIT**

**PACKAGE**

**POLICY**

**UNITED STATES LIABILITY  
INSURANCE GROUP**

A BERKSHIRE HATHAWAY COMPANY

1190 Devon Park Drive  
Wayne, PA 19087-2191  
888-523-5545 – [USLI.COM](http://USLI.COM)

This policy jacket together with the policy declarations, coverage forms and endorsements, if any, complete this policy.

The enclosed declarations designates the issuing company.

# NON PROFIT PACKAGE POLICY

Read your policy carefully!

**In Witness Whereof**, the company has caused this Policy to be executed and attested. Where required by law, this Policy shall not be valid unless countersigned by a duly authorized representative of the company.

Secretary

Handwritten signature of the Secretary, appearing to read "James F. Pittman".

President

Handwritten signature of the President, appearing to read "Thomas P. Kinney".