



A GUIDE TO
CLUSTER BOX UNITS
(CBU)

HONOLULU DISTRICT
MAY 2007

CLUSTER BOX UNITS (CBU)

- STANDARD MOST COMMONLY INSTALLED UNITS -



FCBU Type I
8-box Unit



FCBU Type II
12-box Unit



FCBU Type IV
13-box Unit



OUTDOOR PARCEL LOCKER



Model 1570 (F) CBU

16-BOX UNIT

CLUSTER BOX UNIT (CBU) ANCHORING METHODS - CONCRETE PAD SPECIFICATIONS -

The attached documents are the only USPS approved specifications for pouring concrete pads for the anchoring of CBUs.

CONCRETE SPECIFICATIONS FOR SINGLE UNIT CONCRETE PAD

CONCRETE SPECIFICATIONS FOR MULTIPLE UNIT CONCRETE PAD

ANCHORING METHODS FOR CLUSTER BOX UNITS (CBU)

CBUs must be installed approximately one week prior to customer occupancy.

CBUs must not be installed until the local USPS representative has conducted an on-site visit to ensure compliance with the official specifications. **Contact the local USPS representative to have the pads inspected prior to pouring the concrete.**

CBUs must be installed facing the correct direction. CBU installed on concrete pads poured behind the sidewalk should face the sidewalk. CBU installed on concrete pads located in landscape strips between the curb and the sidewalk should face the sidewalk. Do not install CBU facing the curb or street—causing the carrier and the customer to stand in the street to deliver or retrieve mail.

CBUs should not be installed so close to an intersection or traffic lane that they block visibility for approaching traffic or could be struck by a passing motor vehicle.

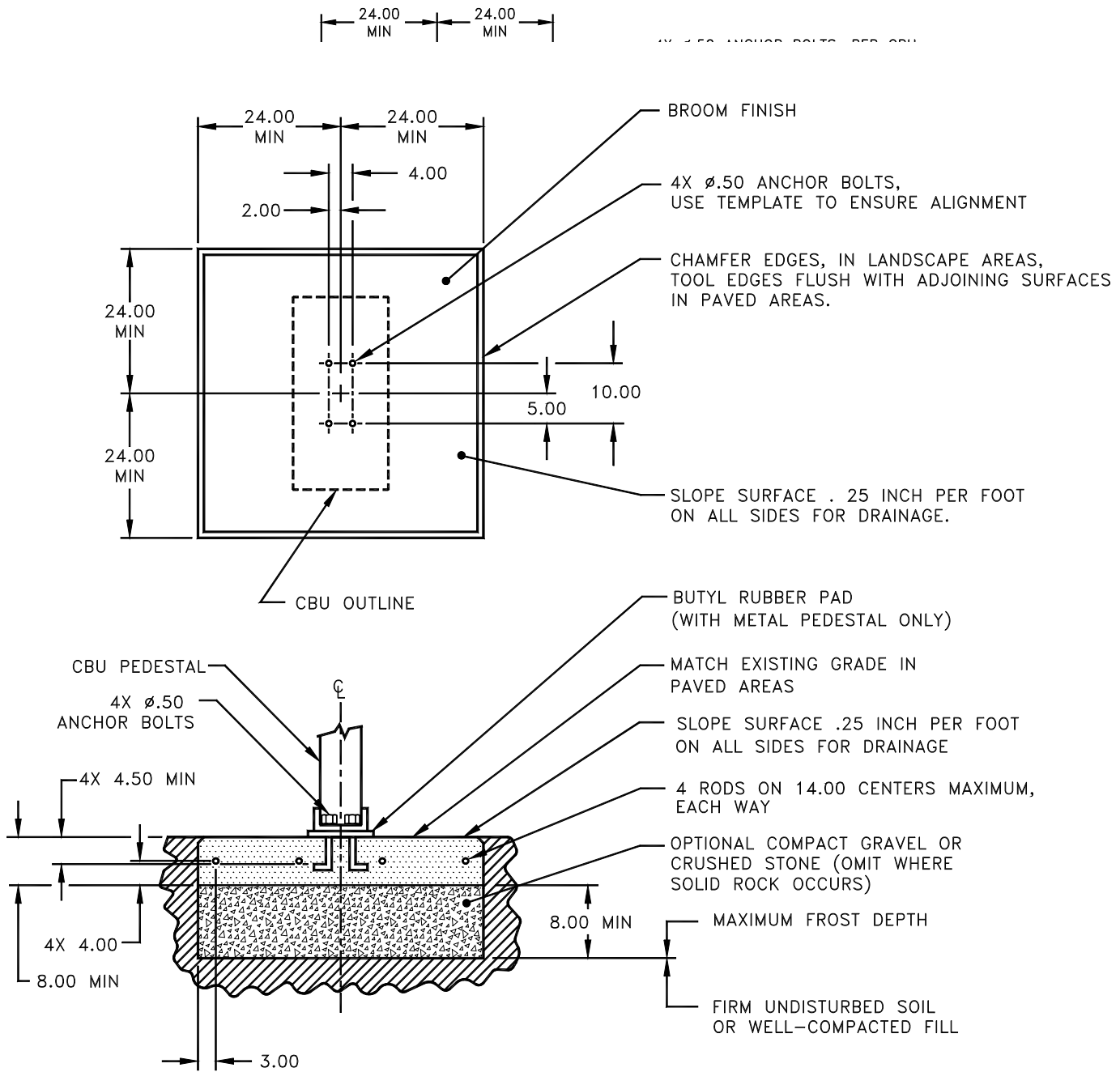
CBUs should not be located on dead-end streets where there is no safe turnaround for Postal delivery vehicles.

Notify your local USPS representative immediately upon completion of the CBU installation so that we can install the arrow lock and secure the unit.

All CBU compartment keys will be distributed by the builder/developer at the time of move in. The local USPS representative needs to be contacted by the builder/developer for the box address assignments. Each homeowner should receive a copy of the Mode of Delivery Agreement at the time of move in.

Any deviations from the USPS designated location of the CBU must not occur without first receiving authorization from the local USPS representative.

USPS APPROVED SPECIFICATIONS – CONCRETE PAD (SINGLE UNIT)



NOTES:

1. CONCRETE SHALL HAVE A COMPRESSIVE STRENGTH OF 3000 PSI @ 28 DAYS, CONTAIN 4% MIN – 6% MAX AIR ENTRAINMENT AND BE PLACED WITH A 3.50 – 4.50 SLUMP IN ACCORDANCE WITH ACI 301.
2. REINFORCING STEEL RODS SHALL CONFORM TO ASTM A615, GRADE 60.
3. ANCHOR BOLTS SHALL CONFORM TO ASTM A193, GRADE B8M, TYPE 316 STAINLESS STEEL.

USPS APPROVED SPECIFICATIONS – CONCRETE PAD (MULTIPLE UNIT)

CLUSTER BOX UNIT (CBU) ANCHORING METHODS

CBUs must be level and mounted firmly in concrete, using one of the following methods.

1. The J-bolt method is the preferred method of installation of CBUs on concrete pads; however, the J-bolt pattern must be accurate with the CBU pedestal plate. When using J-bolts, in order to prevent any damage or accidents that could result from the exposed bolts, consideration should be given as to the time lapse between pouring the concrete and the actual installation. Expansion anchors must be installed in accordance with the manufacturer's instructions.
2. The use of anchor bolts for the installation of CBUs on concrete pads is also acceptable as long as the methods described below are followed.
 - a. Hilti Kwik bolt II, 1/2" diameter X 5-1/2" overall length
Catalog Number: 000-453-696, KB II 12-512
Stainless Steel Catalog Number: 000-454-744
Minimum embedment in concrete must be no less than 3-1/2"
 - b. ITW Ramset Redhead Trublots, galvanized, 1/2" diameter X 7" overall length
 - c. Rawl Stud, 1/2" diameter X 5 1/2" overall length, galvanized.
Catalog Number: 7324
Minimum embedment in concrete must be no less than 4"

CLUSTER BOX UNIT (CBU) CONCRETE PAD REQUIREMENTS

- ALL FREE STANDING PADS MUST BE 8" THICK -

1 BOX	SINGLE PAD	4' X 4' (C&C HNL 4'X6')
2 BOXES	DOUBLE PAD	4' X 7'
3 BOXES	TRIPLE PAD	4' X 10'
4 BOXES	QUAD PAD	4' X 13'

**WHEN PLACING A PARCEL LOCKER AT ANY CBU LOCATION,
INCREASE THE PAD SIZE BY AN ADDITIONAL 4' X 4'**

**USPS APPROVED MANUFACTURERS OF
CLUSTER BOX UNITS (CBUs) & WALL-MOUNTED CENTRALIZED MAIL RECEPTACLES
(USPS-B-1118F, USPS-STD-4B+ AND USPS-STD-4C)**

USPS-STD-B-118F

COMPANY	ADDRESS	CITY	STATE	ZIP	PHONE	WEB SITE	DESIGN TYPES
Auth-Florence Manufacturing	5935 Corporate Dr.	Manhattan	KS	66503-9675	800-275-5081	www.auth-florence.com	Types 1,11,111 & IV

USPS -STD-4B+

COMPANY	ADDRESS	CITY	STATE	ZIP	PHONE	WEB SITE	DESIGN TYPES
American Device Manufacturing	5935 Corporate Dr.	Manhattan	KS	66503-9675	800-275-5081	www.auth-florence.com	Horizontal units only
American Eagle	3017 Wheel Lock St	Dallas	TX	75220-2944	214-358-5544	www.americaneaglemailbox.com	Horizontal units only
Auth-Florence Manufacturing	5935 Corporate Dr.	Manhattan	KS	66503-9675	800-275-5081	www.auth-florence.com	Horizontal & Vertical Units
Bommer Industries	PO Box 187	Landrum	SC	29366-0187	800-334-1654	www.bommer.com	Horizontal & Verticle Units
Jensen Industries	1946 E 46th St	Los Angeles	CA	90058-2096	800-235-8351	www.jensen-ind.com	Horizontal & Verticle Units
Salisbury Industries	1010 East 62nd St	Los Angeles	CA	90001-1598	800-323-3003	www.mailboxes.com	Horizontal & Verticle Units
Security Manufacturing	815 S Main St	Grapevine	TX	76051-5535	800-762-6937	www.securitymanufacturing.com	Horizontal & Verticle Units

USPS -STD-4C

COMPANY	ADDRESS	CITY	STATE	ZIP	PHONE	WEB SITE	DESIGN TYPES
Postal Products Unlimited	500 W Oklahoma Ave	Milwaukee	WI	53207-2649	800-229-4500	www.mailproducts.com	Horizontal

Notes: Buildings with permits dated on or after October 5th, 2006 must have USPS-STD-4C receptacles.